

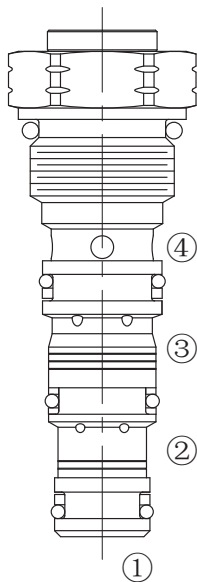
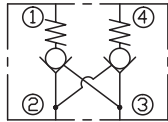
LDPC5-08

液压锁

说明 DESCRIPTION

A cartridge-style dual pilot-operated check valve
 螺纹插装双向液压锁

SYMBOL



工作 OPERATION

The valve will block flow from ① to ②, and from ④ to ③. Flow is allowed in the opposite direction when pressure is applied to port ② and/or port ③.

The valve has a 4.5:1 pilot ratio, so at least 1/4.5 of the load pressure at port ① or ④ is required at the pilot lines (port ③ or ②) to open the flow passage to allow flow from port ① or ④.

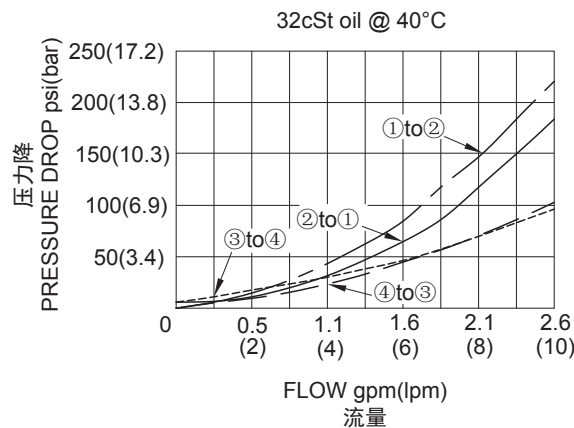
①到②, ④到③关闭; 在相反方向, ②到①, ③到④打开。

此阀有 4.5 : 1 的控制比, 所以在②口或③口的压力超过④口或①口的负载压力的 1/4.5 时, ④到③, ①到②打开。

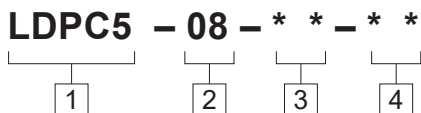
技术参数 SPECIFICATIONS

工作压力 (Operating Pressure):	207bar
流量 (Flow):	See PRESSURE DROP VS.FLOW graph.
单向阀泄漏(Check Valve Leakage):	2 drops/min. (滴/分) at 207bar
开启压力 (Crack Pressures):	0.4=0.4bar 1.7=1.7bar 3.4=3.4bar
控制比 (Pilot Ratio):	4.5 : 1
温度 (Temperature):	-40°F to +250°F(-40°C to +120°C)
过滤 (Filtration):	See Page (参见)N-1
油液 (Fluids):	Mineral-based fluids with viscosities of 7.4 to 420 cSt. (矿物油粘度)
插孔 (Cavity):	08-4, See page M-1
阀块材料 (Body Material):	6061-T6 aluminum alloy rated to 207bar, Steel & Ductile iron rated to 350bar 6061-T6铝,允许使用最大压力207bar 钢和球铁允许使用最大压力350bar

压力 - 流量曲线 PRESSURE DROP VS.FLOW



订货代号 TO ORDER



1 功能

LDPC5= 液压锁
Dual Pilot-Operated
Cartridge Check Valve

3 开启压力 Cracking Pressure

0.4= 0.4bar
1.7= 1.7bar
3.4= 3.4bar

4 阀块油口 Body Porting

空白 Blank= 不带阀块 None
4T=SAE4
6T=SAE6
2G=G 1/4
3G=G 3/8

2 规格 Size

08=08 规格

※ 阀块详见章节 K-3
其它螺纹油口也是可选择的
Other Porting is Available

D

安装尺寸 INSTALLATION DIMENSIONS

Unit=Millimeters

