

# LCXJA

## 锥阀型单向阀

### 说明 DESCRIPTION

A cartridge-style poppet-type check valve

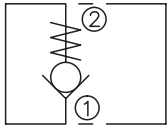
锥阀式螺纹插装单向阀

### 工作 OPERATION

Pressure at ① overcomes the spring-bias poppet and allows free ① to ② . Flow in the opposite direction, from ② to ① ,is blocked by the poppet.

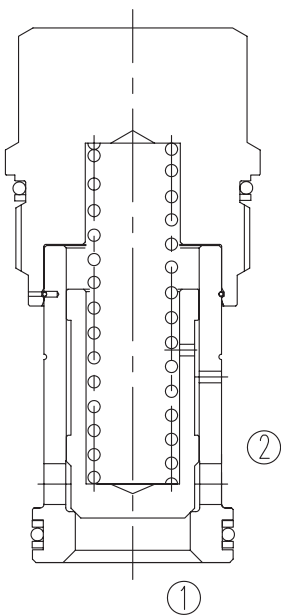
当在①口的压力超过开启压力，①到②开启；在反向，②到①关闭。

### SYMBOL

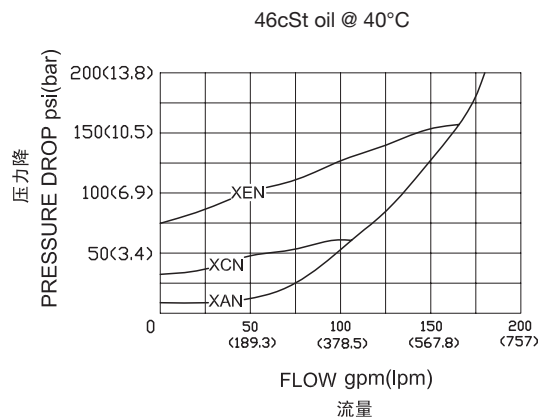


### 技术参数 SPECIFICATIONS

工作压力(Operating Pressure):	350bar
流量(Flow):	See PRESSURE DROP VS.FLOW graph.
内泄漏(Internal Leakage):	1 drops/min(滴/分). max. at 350bar
开启压力(Crack Pressures):	C=2.0bar A=0.3bar B=1.0bar D=3.5bar E=5.0bar F=7.0bar G=10.5bar
温度(Temperature):	-40°F to +250°F(-40°C to +120°C)
过滤(Filtration):	See page (参见) N-1
油液(Fluids):	Mineral-based fluids with viscosities of 7.4 to 420 cSt.(矿物油粘度)
插孔(Cavity):	SUN T-18A,See page M-8
阀块材料(Body Material):	Steel & Ductile iron rated to 350bar 钢和球铁允许使用最大压力350bar



### 压力 - 流量曲线 PRESSURE DROP VS.FLOW



## 订货代号 TO ORDER

**LCX J A - X \* \* - \* \***

┌───┐
┌──┐
┌──┐
┌──┐
┌──┐
┌──┐

1
2
3
4
5
6

- |   |   |   |
|---|---|---|
| <p><b>1</b> 功能<br/>LCX= 单向阀 Check Valve</p>                   | <p><b>4</b> 开启压力 <b>Cracking Pressure</b><br/>C=2bar(30psi)<br/>A=0.3bar(4psi)<br/>B=1bar(15psi)<br/>D=3.5bar(50psi)<br/>E=5bar(75psi)<br/>F=7bar(100psi)<br/>G=10.5bar(150psi)</p> | <p><b>6</b> 阀块油口 <b>Body Porting</b><br/>空白 Blank= 不带阀块 None<br/>16T=SAE16<br/>20T=SAE20<br/>8G=G 1</p> |
| <p><b>2</b> 流量 <b>Flow</b><br/>J=610L/min</p>                 | <p><b>5</b> 油封 <b>Seal Kits</b><br/>N= 丁晴橡胶 Buna N<br/>V= 氟橡胶 Viton</p>   | <p>其它螺纹油口也是可选择的<br/>Other Porting is Available</p>  |
| <p><b>3</b> 控制方式 <b>Control</b><br/>X= 不可调 Non Adjustable</p> |   |   |

D

## 安装尺寸 INSTALLATION DIMENSIONS

Unit=Millimeters

