

MHDBV16K2-3X420VFB

先导式溢流阀

说明 DESCRIPTION

A pilot-operated , poppet-type pressure relief valve
先导座阀式溢流阀

工作 OPERATION

The valve prevents flow from ① to ② until pressure at ① exceeds the set crack pressure and opens the pilot section. The pilot flow creates a pressure differential across the poppet which causes the valve to open allowing flow from ① to ② protecting the circuit from over pressurization.

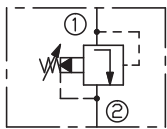
Pressure at ② is directly additive to the relief setting of the valve.

阀体①口和②口不通，直到①口压力超过设定压力且打开先导阀芯。这样，先导阀芯引起主阀芯两端压力差的变化，压力差达到一定时，①口和②口互通。②口的压力直接叠加到溢流阀设定值上。

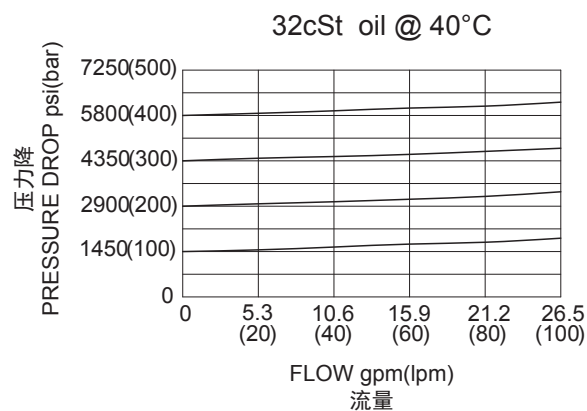
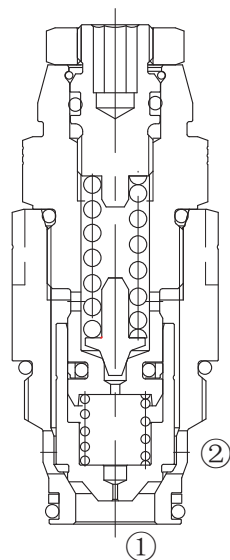
技术参数 SPECIFICATIONS

最大工作压力 (Max. Operating Pressure):	420bar
流量 (Flow) :	100 L/min
内泄漏 (Internal Leakage):	15 drops/min. (15滴/分) max. to 70% of nominal setting
温度 (Temperature):	-40°F to +250°F(-40°C to +120°C)
过滤 (Filtration):	See Page (参见) N-1
油液 (Fluids):	Mineral-based fluids with viscosities of 7.4 to 420 cSt. (矿物油粘度)
插孔 (Cavity):	Rexroth-FB, See page M-15
阀块材料 (Body Material):	Steel & Ductile iron rated to 350bar 钢和球铁允许使用最大压力350bar

SYMBOL

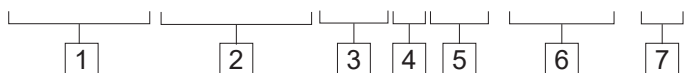


压力 – 流量曲线 PRESSURE DROP VS.FLOW



订货代号 TO ORDER

MHDBV 16K2-3X 420 V FB / * * * * - * *



- | | | |
|---|--|---|
| <p>1 功能
MHDBV= 先导式溢流阀
Adjustable Pilot-Operated
Cartridge Relief Valve</p> | <p>3 压力范围 Spring Ranges
420=1450-6090psi(100-420bar)
Preset:3600psi(250bar)</p> | <p>6 设定压力 Settings In Bar
空白 Blank= 预设定 Preset
例 Example:0200=200bar</p> |
| <p>2 规格 Size
16K2-3X=16K2-3X 规格</p> | <p>4 油封 Seal Kits
V= 氟橡胶 Viton</p> | <p>7 阀块油口 Body Porting
空白 Blank= 不带阀块 None
12T=SAE12
6G=G 3/4</p> |
- 其它螺纹油口也是可选择的
Other Porting is Available

安装尺寸 INSTALLATION DIMENSIONS

Unit=Millimeters

