

LVSAN-08A

直动式溢流阀 (先导级)

说明 DESCRIPTION

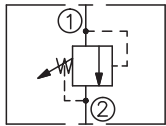
A cartridge-style direct-acting poppet-type relief valve
直动座阀式溢流阀

工作 OPERATION

Flow is blocked from ① to ② until pressure increases to meet the selected valve setting, lifting the poppet from its seat and allowing relief flow through port ② to tank. Pressure at port ② is additive to the relief setting of the valve. The cartridge is especially suited for pilot or thermal relief applications.

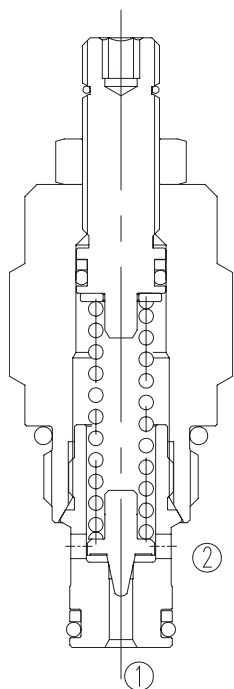
当①口压力达到阀设定值，阀开始通过②口向油箱溢流。②口压力将直接作用于阀设定上。此阀尤其适合先导或热溢流的应用。

SYMBOL

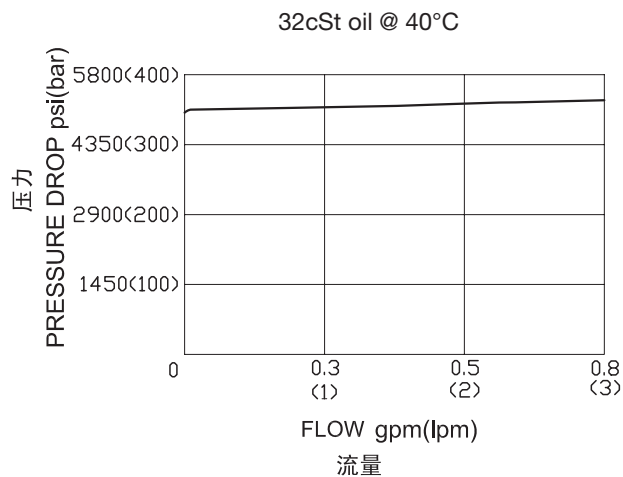


技术参数 SPECIFICATIONS

①口最大工作压力(Max. Operating Pressure Port ①):	450bar
②口最大工作压力(Max. Operating Pressure Port ②):	140bar
流量(Flow):	See PRESSURE DROP VS. FLOW graph.
内泄漏(Internal Leakage):	15 drops/min(滴/分) max.
弹簧调压范围(Standard Spring Ranges):	35-350bar; 300-450bar;
温度(Temperature):	-40°F to +250°F(-40°C to +120°C)
过滤(Filtration):	See page (参见) N-1
油液(Fluids):	Mineral-based fluids with viscosities of 7.4 to 420 cSt.(矿物油粘度)
插孔(Cavity):	08-2, See page M-1
阀块材料(Body Material):	Steel & Ductile iron rated to 350bar 钢和球铁允许使用最大压力350bar

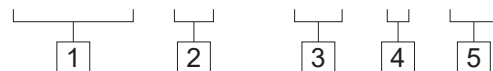


压力 - 流量曲线 PRESSURE DROP VS.FLOW



订货代号 TO ORDER

LVSAN - 08 A - * * - * - * *



- | | | |
|---|---|---|
| <p>1 功能
LVSAN= 直动式溢流阀
Direct-Acting Relief Valve</p> | <p>4 弹簧调压范围 Spring Ranges
空白 Blank=500-5000psi(35-350bar)
Preset:3000psi(210bar)
65=4350-6500psi(300-450bar)</p> | <p>5 阀块油口 Body Porting
空白 Blank= 不带阀块 None
4T=SAE4
6T=SAE6
2G=G 1/4
3G=G 3/8</p> |
| <p>2 规格 Size
08=08 规格</p> | <p>※ 阀块详见章节 K-1
其它螺纹油口也是可选择的
Other Porting is Available</p> | |
| <p>3 调节 Adjustment
空白 Blank=5/32" 内六角调节杆
for 5/32" Hex Allen Head
K= 调节手轮 HandKnob</p> | | |

安装尺寸 INSTALLATION DIMENSIONS

Unit=Millimeters

