

LCBDD

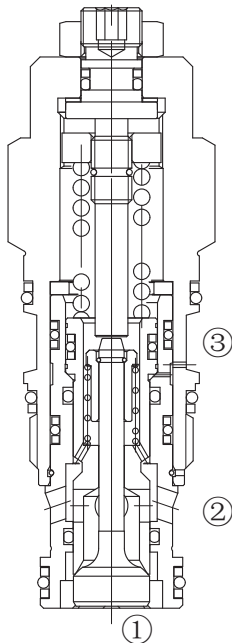
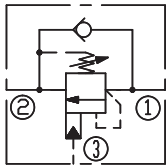
平衡阀

半限流型 /Semi-Restrictive

说明 DESCRIPTION

A cartridge-style semi-restrictive counterbalance valve
半限流型平衡阀

SYMBOL



工作 OPERATION

Counterbalance valves with pilot assist are meant for control on overrunning load. The check valve allows free flow from port ② to port ① while a direct-acting, pilot-assisted relief valve controls flow from port ① to port ②. Pilot assist at port ③ lowers the effective setting of the relief valve at a rate determined by the pilot ratio.

带先导开启平衡阀用于控制超越负载工况。油液从②口到①口单向自由流动；油液经直动，先导辅助从①口溢流到②口，③口是溢流辅助控制口，按控制比降低溢流功能的有效设定值。

特性 FEATURES

- Counterbalance valves should be set at least 1.3 times the maximum load induced pressure.

最大设定压力至少为最大负载压力的 1.3 倍。

- Full clockwise setting is less than 14 bar.

完全释压情况下，设定低于 14bar。

- Backpressure at port ② adds to the effective relief setting at a ratio of 1 plus the pilot ratio times the backpressure.

②口的背压按“控制比 +1”的倍数加到溢流阀的设定值上即增加值 = (1+ 控制比) × 压力值。

- Reseat exceeds 85% of set pressure when the valve is standard set. Setting lower than the standard

set pressure may result in lower reseal percentages.

标准设定时，闭合压力值大于设定压力值的 85%；低于标准设定，则闭合压力值的百分比相应降低。

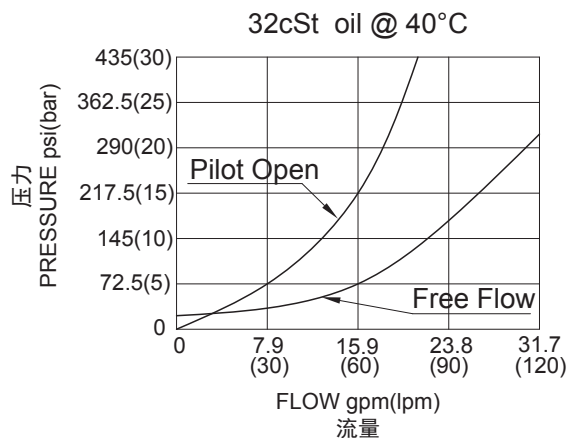
- Factory pressure setting established at 30cc/min(2 in³/min).

工厂的设定是指当溢流阀开启（流量为 30cc/min）时的压力。

技术参数 SPECIFICATIONS

最大设定值 (Max. Setting):	350bar
最大负载 (Max. Recommended Load Pressure at Max. Setting):	270bar
流量 (Flow) :	See PRESSURE DROP VS.FLOW graph.
内泄漏 (Internal Leakage):	5 drops/min.(滴/分)
控制比 (Pilot Rate):	4.5:1
温度 (Temperature):	-40°F to +250°F(-40°C to +120°C)
过滤 (Filtration):	See Page (参见) N-1
油液 (Fluids):	Mineral-based fluids with viscosities of 7.4 to 420 cSt. (矿物油粘度)
插孔 (Cavity):	SUN T-2A,See page M-6
阀块材料 (Body Material):	6061-T6 aluminum alloy rated to 207bar, Steel & Ductile iron rated to 350bar 6061-T6铝，允许使用最大压力207bar 钢和球铁允许使用最大压力350bar

压力 - 流量曲线 PRESSURE DROP VS.FLOW



订货代号 TO ORDER

LCB * * - * * * - * *

1 2 3 4 5 6 7

- | | | |
|---|--|---|
| <p>1 功能
LCB= 平衡阀
Counterbalance Cartridge Valve</p> <hr/> <p>2 流量 Flow
D=76L/min</p> <hr/> <p>3 控制比 Pilot Ratio
D=4.5:1</p> <hr/> <p>4 控制方式 Control
L= 标准螺钉调节
Standard screw Adjustment</p> | <p>5 弹簧调压范围 Spring Ranges
J=2000-5000psi(140-350bar)
Preset:3000psi(210bar)(Check:1.7bar)
K=1000-2500psi(70-175bar)
Preset:2000psi(140bar)(Check:1.7bar)
C=2000-5000psi(140-350bar)
Preset:3000psi(210bar)(Check:0.3bar)
D=1000-2500(70-175bar)
Preset:2000psi(140bar)(Check:0.3bar)</p> <hr/> <p>6 油封 Seal Kits
N= 丁晴橡胶 Buna N
V= 氟橡胶 Viton</p> | <p>7 阀块油口 Body Porting
空白 Blank= 不带阀块 None
8T=SAE8
10T=SAE10
3G=G 3/8
4G=G 1/2</p> <hr/> <p>※ 阀块详见章节 K-23 - K-24
其它螺纹油口也是可选择的
Other Porting is Available</p> |
|---|--|---|

G

安装尺寸 INSTALLATION DIMENSIONS

Unit=Millimeters

