

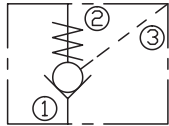
LCODA

液控单向阀 (液控关闭)

说明 DESCRIPTION

A cartridge-style pilot-to- close poppet-type check valve
锥阀式液控关闭单向阀

SYMBOL



工作 OPERATION

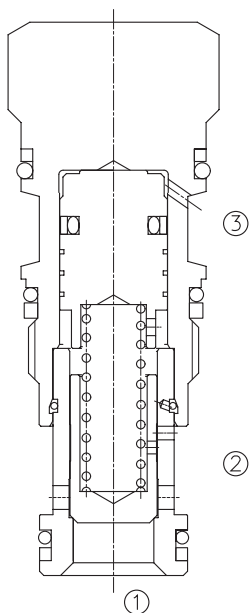
Pressure at ① overcomes the spring-bias poppet and allows free flow to ② . Flow in the opposite direction, from ② to ① ,is blocked by the poppet.

When the required pilot pressure is achieved at ③ ,the poppet is held closed to block flow between ① and ② .The pilot piston area to poppet seat area ratio is 1.8 to 1.

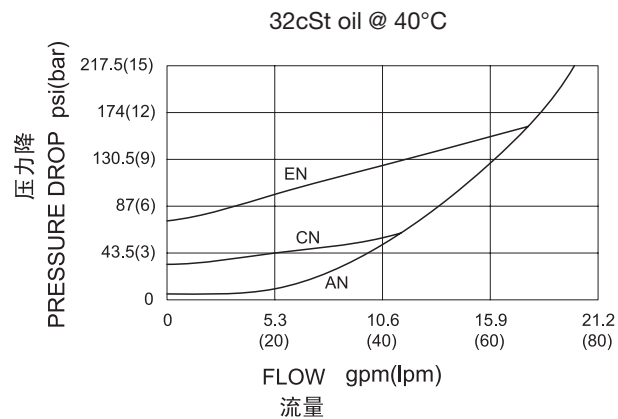
当在①口的压力超过开启压力，①到②开启；在反方向，②到①关闭；
当液控口③压力达到一定时，锥阀芯关闭，①和②不通，液控活塞面积与锥阀座面积比为 1.8:1。

技术参数 SPECIFICATIONS

最大工作压力(Max.Operating pressure):	350bar
流量(Flow):	See PRESSURE DROP VS.FLOW graph.
内泄漏(Internal Leakage):	2 drops/min(滴/分). max. at 350bar
开启压力(Crack Pressures):	A=0.3bar B=1.0bar C=2.0bar D=3.5bar E=5.0bar F=7.0bar
控制比(Pilot Ratio):	1.8:1
温度(Temperature):	-40°F to +250°F(-40°C to +120°C)
过滤(Filtration):	See page (参见) N-1
油液(Fluids):	Mineral-based fluids with viscosities of 7.4 to 420 cSt.(矿物油粘度)
插孔(Cavity):	SUN T-11A, See page M-6
阀块材料(Body Material):	Steel & Ductile iron rated to 350bar 钢和球铁允许使用最大压力350bar



压力 – 流量曲线 PRESSURE DROP VS.FLOW



订货代号 TO ORDER

LCO * A - X * * - * *

┌──┐
└──┘
1 2

┌──┐
└──┘
3 4 5

┌──┐
└──┘
6

1 功能

LCO= 液控单向阀
Pilot to Close Check Valve

2 流量 Flow

D=80 L/min.

3 控制方式 Control

X= 常规 Standard

4 开启压力 Cracking Pressure

A=0.3bar
B=1.0bar
C=2.0bar
D=3.5bar
E=5.0bar
F=7.0bar

5 油封 Seal Kits

N= 丁晴橡胶 Buna N
V= 氟橡胶 Viton

6 阀块油口 Body Porting

空白 Blank= 不带阀块 None
6T=SAE6
8T=SAE8
3G=G 3/8
4G=G 1/2

※ 阀块详见章节 K-17—K-22
其它螺纹油口也是可选择的
Other Porting is Available

D

安装尺寸 INSTALLATION DIMENSIONS

Unit=Millimeters

