

LCVR-10-P

反向型单向阀

说明 DESCRIPTION

A cartridge-style poppet-type check valve

反向锥阀式螺纹插装单向阀

工作 OPERATION

When pressure at ② rises above the spring bias pressure, the poppet is pushed from its seat and flow allowed from ② to ① .

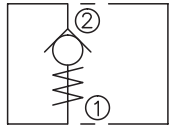
The valve is closed (checked) from ① to ②.

当在②口的压力超过开启压力，②到①开启；
反方向，①到②关闭。

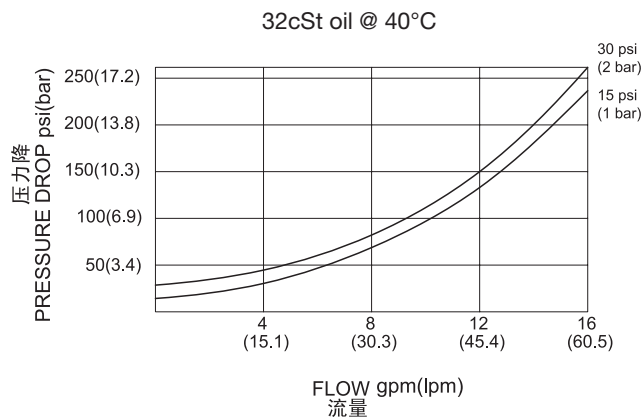
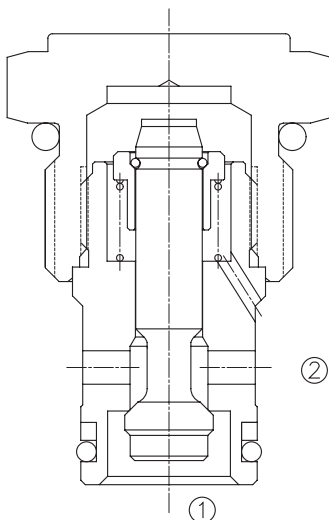
技术参数 SPECIFICATIONS

工作压力(Operating Pressure):	350bar
流量(Flow):	See PRESSURE DROP VS.FLOW graph.
内泄漏(Internal Leakage):	2 drops/min(滴/分). max. at 350bar
开启压力(Crack Pressures):	0.3=0.3bar 1=1bar 2=2bar 3=3bar
温度(Temperature):	-40°F to +250°F(-40°C to +120°C)
过滤(Filtration):	See page (参见) N-1
油液(Fluids):	Mineral-based fluids with viscosities of 7.4 to 420 cSt.(矿物油粘度)
插孔(Cavity):	10-2,See page M-2
阀块材料(Body Material):	Steel & Ductile iron rated to 350bar 钢和球铁允许使用最大压力350Bar

SYMBOL



压力 – 流量曲线 PRESSURE DROP VS.FLOW



订货代号 TO ORDER

LCVR - 10 - P - * * - * *

┌───┐
┌──┐
┌──┐
┌──┐
┌──┐

1
2
3
4
5

1 功能
LCVR= 单向阀 Check Valve

2 规格 **Size**
10=10 规格

3 类型
P= 锥阀型 Poppet

4 开启压力 **Cracking Pressure**
0.3=0.3bar
1=1bar
2=2bar
3=3bar

5 阀块油口 **Body Porting**
空白 Blank= 不带阀块 None
6T=SAE6
8T=SAE8
3G=G 3/8
4G=G 1/2

※ 阀块详见章节 K-4
其它螺纹油口也是可选择的
Other Porting is Available

D

安装尺寸 INSTALLATION DIMENSIONS

Unit=Millimeters

