

# LCV-12-P

单向阀 锥阀型

## 说明 DESCRIPTION

A cartridge-style poppet-type check valve

锥阀式螺纹插装单向阀

## 工作 OPERATION

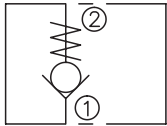
Pressure at ① overcomes the spring-bias poppet and allows free flow from ① to ② .

Flow in the opposite direction, from ② to ① ,is blocked by the poppet.

当在①口的压力超过开启压力，①到②开启；

在反方向，②到①关闭。

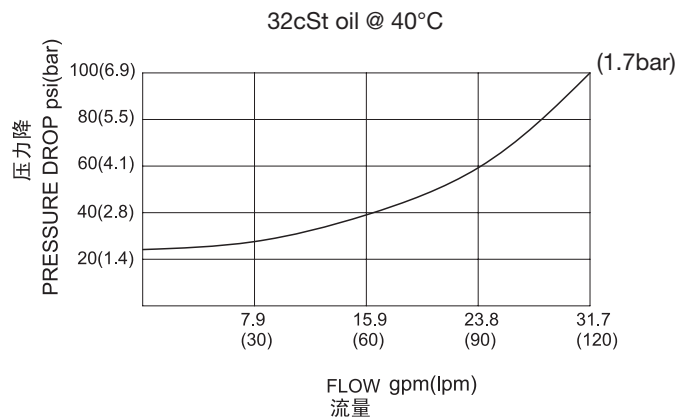
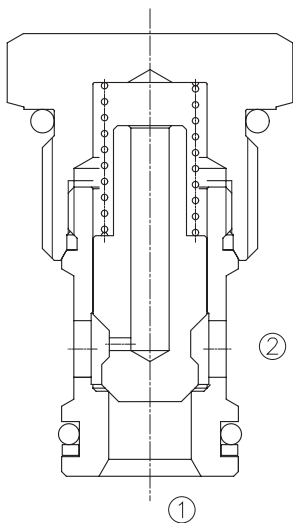
## SYMBOL



## 技术参数 SPECIFICATIONS

|                           |  |
|---------------------------|--|
| 工作压力(Operating Pressure): | 250bar   |
| 流量(Flow):                 | See PRESSURE DROP VS.FLOW graph.   |
| 内泄漏(Internal Leakage):    | 5 drops/min(滴/分). max. at 250bar   |
| 开启压力(Crack Pressures):    | 1.7=1.7bar<br>4.5=4.5bar   |
| 温度(Temperature):          | -40°F to +250°F(-40°C to +120°C)   |
| 过滤(Filtration):           | See page (参见) N-1  |
| 油液(Fluids):               | Mineral-based fluids with viscosities of 7.4 to 420 cSt.(矿物油粘度)  |
| 插孔(Cavity):               | 12-2,See page M-3  |
| 阀块材料(Body Material):      | 6061-T6 aluminum alloy rated to 207bar, Steel & Ductile iron rated to 350bar<br>6061-T6铝,允许使用最大压力207bar 钢和球铁允许使用最大压力350bar |

## 压力 – 流量曲线 PRESSURE DROP VS.FLOW



## 订货代号 TO ORDER

**LCV - 12 - P - \* \* - \* \***

1
2
3
4
5

**1** 功能  
LCV= 单向阀 Check Valve

**2** 规格 **Size**  
12=12 规格

**3** 类型  
P= 锥阀型 Poppet

**4** 开启压力 **Cracking Pressure**  
1.7=1.7bar  
4.5=4.5bar

**5** 阀块油口 **Body Porting**  
空白 Blank= 不带阀块 None  
10T=SAE10  
12T=SAE12  
6G=G 3/4  
8G=G 1

※ 阀块详见章节 K-8  
其它螺纹油口也是可选择的  
Other Porting is Available

D

## 安装尺寸 INSTALLATION DIMENSIONS

Unit=Millimeters

