

# LSV2-08-35C

## 三位五通电磁阀

### 说明 DESCRIPTION

A solenoid operated, 5-way, 3-position, direct acting, spool-type, cartridge valve

三位，五通，滑阀式电磁阀

### 工作 OPERATION

When de-energized, flow between work ports are blocked and load sense at port ① is vented to port ③. When coil S1 is energized, flow is allowed from port ⑤ to port ② and from port ④ to port ③. When coil S2 is energized, flow is allowed from port ⑤ to port ④ and from port ② to port ③. Load sense at port ① is connected to port ⑤ when spool is in shifted positions.

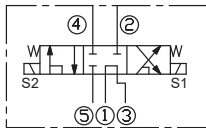
失电时，负载敏感口①口与③口互通，②、④、⑤口均关闭。

当线圈 S1 得电时，允许油液⑤口到②口，④口到③口流动。

当线圈 S2 得电时，允许油液⑤口到④口，②口到③口流动。

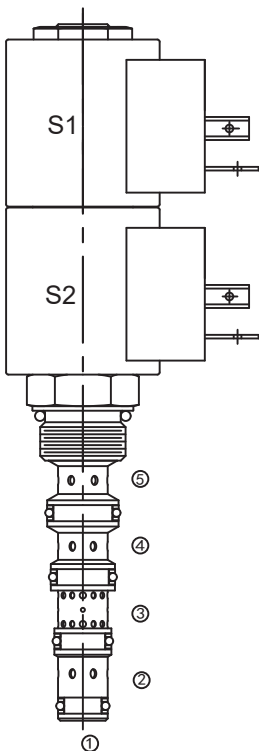
当阀芯处于切换后位置时（即线圈得电时），负载敏感口①口与⑤口互通。

### SYMBOL

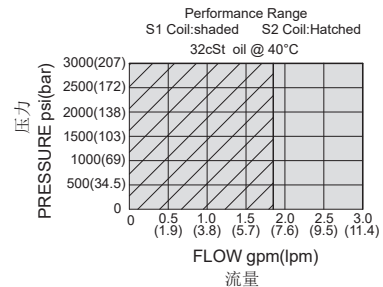
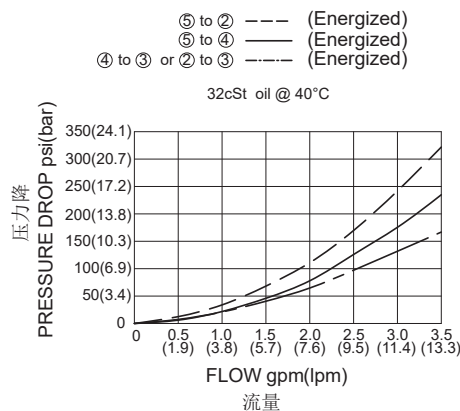


### 技术参数 SPECIFICATIONS

工作压力(Operating Pressure):	207bar
流量(Flow):	See PRESSURE DROP VS.FLOW graph.
内泄漏(Internal Leakage):	197 ml/min.(毫升/分) max. at 207bar
温度(Temperature):	-40°F to +212°F(-40°C to +100°C)
线圈额定负载(Coil Duty Rating):	Continuous from 85% to 115% of nominal voltage(连续工作电压)
过滤(Filtration):	See Page (参见) N-1
油液(Fluids):	Mineral-based fluids with viscosities of 7.4 to 420 cSt.(矿物油粘度)
插孔(Cavity):	08-5, See page M-31
阀块材料(Body Material):	6061-T6 aluminum alloy rated to 207Bar, Steel & Ductile iron rated to 350Bar 6061-T6铝, 允许使用最大压力207Bar 钢和球铁允许使用最大压力350Bar



### 压力 - 流量曲线 PRESSURE DROP VS.FLOW



具体咨询工厂  
For more information about the Performance Range  
Please Consult Factory

**LSV2 - 08 - 35 C - \* \* - \* \***

<p><b>1</b> 功能 LSV2= 电磁阀 Solenoid Valve</p>	<p><b>4</b> 电压 Voltage                  1=12 VDC                  2=24 VDC                  3=110 VAC                  4=220 VAC                  5=10 VDC                  10=20 VDC</p>	<p><b>6</b> 阀块油口 Body Porting                  空白 Blank= 不带阀块 None                  6T=SAE 6                  8T=SAE 8                  2G=G 1/4                  3G=G 3/8</p>
<p><b>2</b> 规格 Size 08=08 规格</p>	<p><b>5</b> 线圈连接 Coil Connection                  D= Double Lead 双线                  H= Hirschmann 三插                  C= Conduit 带嵌套                  ER= Deutsch Connector(Water-proof Coil)                  德意志插座(防水线圈)                  B= Double Spade 双插</p>	<p>其它螺纹油口也是可选择的 Other Porting Is Available</p>
<p><b>3</b> 流道类型 Flow Path 35= 五通</p>		

### 安装尺寸 INSTALLATION DIMENSIONS

Coil Must Be Installed With Letter Up  
 安装线圈时，字母必须朝上。

Unit=Millimeters

