

LRSHC

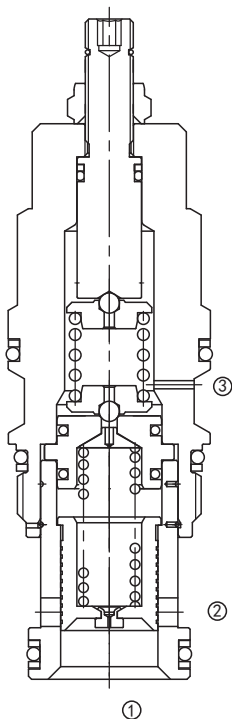
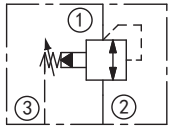
先导式顺序阀

说明 DESCRIPTION

A cartridge-style pilot operated, spool-type sequence valve with internal pilot and spring chamber drain.

内控，滑阀型先导式顺序阀

SYMBOL



工作 OPERATION

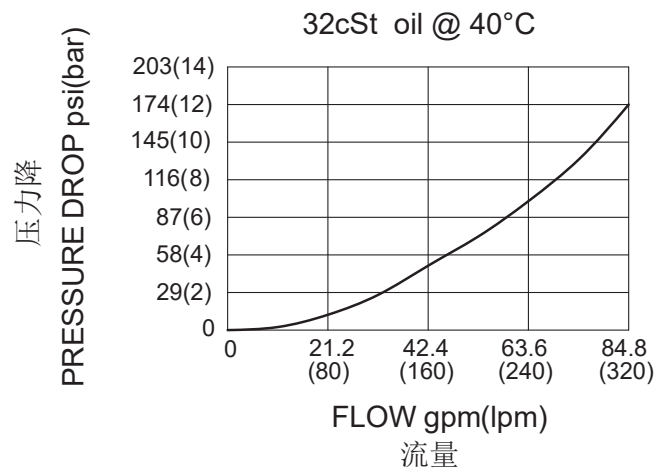
The valves will supply a secondary circuit with flow once the pressure at the inlet (port ①) has exceeded the valve setting. The pressure setting of a sequence valve controls the pressure at inlet (port ①) relative to the pressure at the drain (port ③). These valves are insensitive to back pressure at port ②, up to the valve setting. They may be used to regulate pressure in place of 2-port relief valves if there is pressure in the return line.

此阀将在进油口（油口①）压力超过阀的设定之后向次级油路供油。进油口（油口①）的设定压力取决于外泄口（油口③）。此阀的设定值对②口的背压不敏感。如果回路中有压力存在，此阀可以用来代替 2 油口溢流阀完成对压力的调节。

技术参数 SPECIFICATIONS

工作压力(Operating Pressure):	350bar
流量(Capacity):	See PRESSURE DROP VS.FLOW graph
内泄漏(Internal Leakage):	65 cc/min (毫升/分) Max. at 70bar
弹簧调压范围(Standard Spring Ranges):	A 7-210bar; Preset (预设) : 70bar W 10.5-315bar; Preset (预设) : 70bar B 3.5-105bar; Preset (预设) : 70bar C 10.5-420bar; Preset (预设) : 70bar D 1.7-55bar; Preset (预设) : 28bar E 1.7-28bar; Preset (预设) : 14bar N 4-55bar; Preset (预设) : 28bar
温度(Temperature):	-40°F to +250°F(-40°C to +120°C)
过滤(Filtration):	See Page (参见) N-1
油液(Fluids):	Mineral-based fluids with viscosities of 7.4 to 420 cSt. (矿物油粘度)
插孔(Cavity):	SUN T-17A, See page M-7
阀块材料(Body Material):	Steel & Ductile iron rated to 350bar 钢和球铁允许使用最大压力350bar

压力 - 流量曲线 PRESSURE DROP VS.FLOW



订货代号 TO ORDER

LRS H C - * * * - * *

┌───┐ ┌───┐ ┌───┐ ┌───┐ ┌───┐ ┌───┐

└───┘ └───┘ └───┘ └───┘ └───┘ └───┘

1 2 3 4 5 6

- | | | |
|--|--|--|
| <p>1 功能
LRS= 先导式顺序阀
Pilot Operated, Spool-type
Sequence Valve</p> | <p>4 弹簧调压范围 Spring Ranges
 A=100-3000psi(7-210bar) Preset:1000psi(70bar)
 W=150-4500psi(10.5-315bar) Preset:1000psi(70bar)
 B=50-1500psi(3.5-105bar) Preset:1000psi(70bar)
 C=150-6000psi(10.5-420bar) Preset:1000psi(70bar)
 D=25-800psi(1.7-55bar) Preset:400psi(28bar)
 E=25-400psi(1.7-28bar) Preset:200psi(14bar)
 N=60-800psi(4-55bar) Preset:400psi(28bar)
 Factory Pressure setting established at 15L/min;
 工厂的设定是指顺序阀开启 (流量为 15L/min) 时的压力;</p> | <p>6 阀块油口 Body Porting
 空白 Blank= 不带阀块 None
 12T=SAE 12
 16T=SAE 16
 6G=G 3/4
 8G=G 1</p> |
| <p>2 流量 Capacity
D=240L/min</p> | <p>5 油封 Seal Kits
 N= 丁晴橡胶 Buna N
 V= 氟橡胶 Viton</p> | <p>※ 阀块详见章节 K-25
 其它螺纹油口也是可选择的
 Other Porting is Available</p> |
| <p>3 控制方式 Control
L= 标准螺钉调节
Standard Screw Adjustment</p> | | |

安装尺寸 INSTALLATION DIMENSIONS

Unit=Millimeters

