

LRQEB

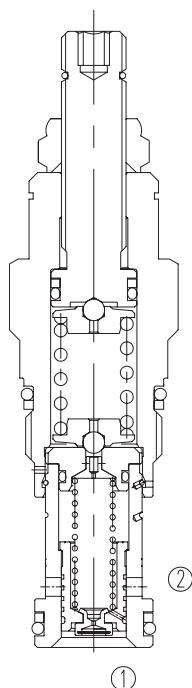
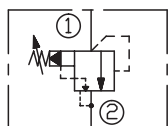
先导式溢流阀 (切断型)

说明 DESCRIPTION

A cartridge-style kick-down pilot-operated balanced piston relief valve.

切断型，先导控制式，平衡滑阀溢流阀。

SYMBOL



工作 OPERATION

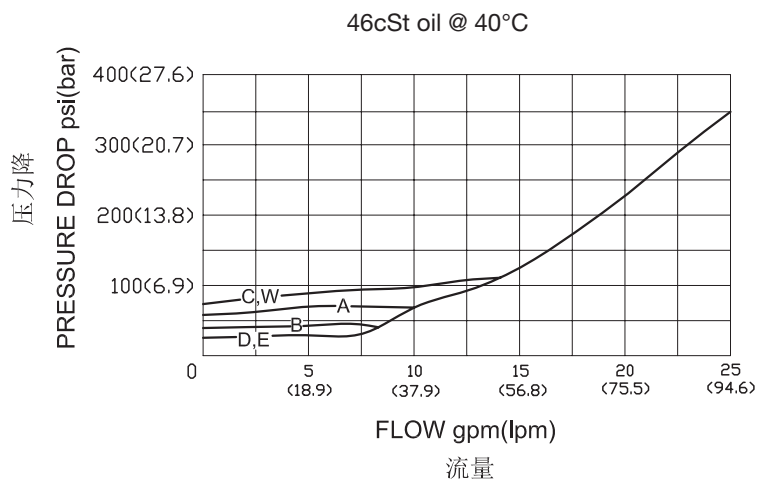
Kick-down relief cartridges act similar to a circuit breaker in an electrical system. The valves will kick completely open and remain open once the pressure at the inlet (port ①) exceeds the valve setting, creating an unrestricted flow path from port ① to tank (port ②). The valve remains open as long as the pressure at port ① exceeds the pressure at port ②. To reset the valve, pressure at port ① must fall below the setting of the valve, flow from ① to ② must cease; pressure at port ② must be equal to or greater than the pressure at port ①.

切断型溢流阀与电路中的断路器功能类似。当进口（口①）压力超过阀的设定值，此类阀会完全打开并且保持全开状态，液流从口①到油箱（口②）自由流通。只要口①压力超过口②压力，阀就会一直保持打开状态。仅在油口①的压力低于阀的设定压力基础上，油口①到油口②无油液流动，或者油口②的压力大于等于油口①的压力，此阀才能复位。

技术参数 SPECIFICATIONS

工作压力(Operating Pressure):	350bar
流量(Capacity):	See PRESSURE DROP VS.FLOW graph
内泄漏(Internal Leakage):	30 cc/min(毫升/分)max. at 70bar.
弹簧调压范围(Standard Spring Ranges):	A 7-210bar; Preset(预设):70bar B 3.5-105bar; Preset(预设):70bar C 10.5-420bar; Preset(预设):70bar D 1.7- 55bar; Preset(预设):28bar E 1.7- 28bar; Preset(预设):14bar W 10.5- 315bar; Preset(预设):70bar
温度(Temperature):	-40°F to +250°F(-40°C to +120°C)
过滤(Filtration):	See page (参见) N-1
油液(Fluids):	Mineral-based fluids with viscosities of 7.4 to 420 cSt.(矿物油粘度)
插孔(Cavity):	SUN T-10A, See page M-7
阀块材料(Body Material):	Steel & Ductile iron rated to 350bar 钢和球铁允许使用最大压力350bar

压力 - 流量曲线 PRESSURE DROP VS.FLOW



订货代号 TO ORDER

LRQ E B - * * * - * *

1
2
3
4
5
6

- | | | |
|---|---|--|
| <p>1 功能
LRQ= 切断型溢流阀
Kick-down, Pilot Operated
Balanced Piston Relief Valve</p> | <p>4 弹簧调压范围 Spring Ranges
 A=100-3000psi(7-210bar) Preset:1000psi(70bar)
 B=50-1500psi(3.5-105bar) Preset:1000psi(70bar)
 C=150-6000psi(10.5-420bar) Preset:1000psi(70bar)
 D=25-800psi(1.7-55bar) Preset:400psi(28bar)
 E=25-400psi(1.7-28bar) Preset:200psi(14bar)
 W=150-4500psi(10.5-315bar) Preset:1000psi(70bar)
 Factory Pressure setting established at 15L/min;
 工厂的设定是指溢流阀开启 (流量为 15L/min) 时的压力;</p> | <p>6 阀块油口 Body Porting
 空白 Blank= 不带阀块 None
 6T=SAE6
 8T=SAE8
 2G=G 1/4
 3G=G 3/8</p> |
| <p>2 流量 Capacity
E=95L/min</p> | <p>5 油封 Seal Kits
 N= 丁晴橡胶 Buna N
 V= 氟橡胶 Viton</p> | <p>※ 阀块详见章节 K-13
 其它螺纹油口也是可选择的
 Other Porting is Available</p> |
| <p>3 控制方式 Control
L= 标准螺钉调节
Standard Screw Adjustment</p> | | |

安装尺寸 INSTALLATION DIMENSIONS

Unit=Millimeters

