

LRPGC(导压操作, 平稳响应型)

先导式溢流阀

说明 DESCRIPTION

A cartridge-style smooth-and-quiet balanced piston relief valve 平稳响应型, 先导滑阀式溢流阀

工作 OPERATION

The valves are normally closed, pressure-limiting valves used to protect hydraulics components from pressure transients. When the pressure at the inlet (port ①) reaches the valve setting, the valve starts to open to tank (port ②), throttling flow to limit the pressure rise. The valves are accurate, have low pressure rise flow they are smooth and quiet, and are moderately fast.

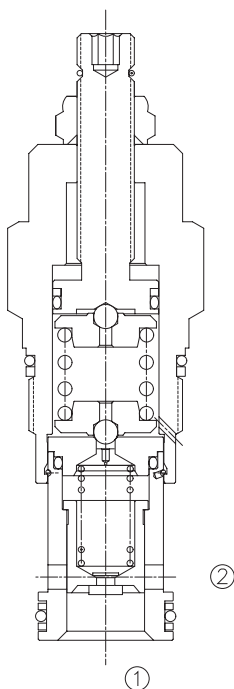
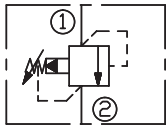
Back pressure on the tank port ② is directly additive to the valve setting at a 1:1 ratio. 先导式滑阀型溢流阀用于保护系统的压力瞬时过载。当①口压力超过设定值时, ①口到②口溢流过载, 限制压力升高。

②口背压会按 1:1 叠加到阀的设定压力上。

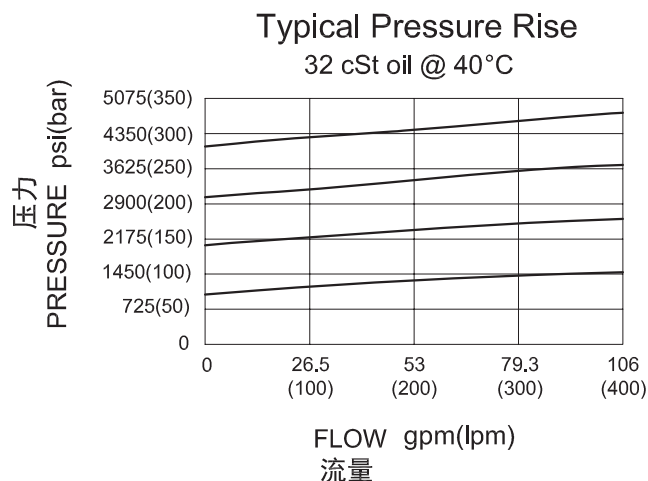
技术参数 SPECIFICATIONS

最大工作压力(Max.Operating Pressure):	350bar
流量(Capacity):	200 L/min.
内泄漏(Internal Leakage):	50 cc/min. at 70 bar
响应时间(Response Time- Typical):	10 ms
弹簧调压范围(Standard Spring Ranges):	A 7 to 210 bar, preset预设:70bar B 3.5 to 105 bar, preset预设:70bar C 10.5 to 420 bar, preset预设:70bar D 1.7 to 55 bar, preset预设:28bar E 1.7 to 28 bar, preset预设:14bar W 10.5 to 315 bar, preset预设:70bar N 4 to 55 bar, preset预设:28bar Q 4 to 28 bar, preset预设:14bar
温度(Temperature):	-40°F to +250°F(-40°C to +120°C)
过滤(Filtration):	See page (参见) N-1
油液(Fluids):	Mineral-based fluids with viscosities of 7.4 to 420 cSt.(矿物油粘度)
插孔(Cavity):	SUN T-3A, See page M-9
阀块材料(Body Material):	Steel & Ductile iron rated to 350bar 钢和球铁允许使用最大压力350bar

SYMBOL



压力 - 流量曲线 PRESSURE DROP VS.FLOW



订货代号 TO ORDER

LRP * C - * * * - * *

1
2
3
4
5
6

<p>1 功能 LRP= 先导式溢流阀 Smooth-and-quiet Pilot-operated Relief Valve</p>	<p>4 弹簧调压范围 Spring Ranges A=100-3000psi(7-210bar) Preset:1000psi(70bar) B=50-1500psi(3.5-105bar) Preset:1000psi(70bar) C=150-6000psi(10.5-420bar) Preset:1000psi(70bar) D=25-800psi(1.7-55bar) Preset:400psi(28bar) E=25-400psi(1.7-28bar) Preset:200psi(14bar) W=150-4500psi(10.5-315bar) Preset:1000psi(70bar) N=60-800psi(4-55bar) Preset:400psi(28bar) Q=60-400psi(4-28bar) Preset:200psi(14bar)</p>	<p>5 油封 Seal Kits N= 丁晴橡胶 Buna N V= 氟橡胶 Viton</p> <hr/> <p>6 阀块油口 Body Porting 空白 Blank= 不带阀块 None 8T=SAE8 10T=SAE10 3G=G 3/8 4G=G 1/2</p>
<p>2 流量 Capacity G=200L/min</p>	<p>3 控制方式 Control L=Standard Screw Adjustment K=Handknob</p>	<p>※ 阀块详见章节 K-15 其它螺纹油口也是可选择的 Other Porting is Available</p>

Factory Pressure setting established at 15L/min;
工厂的设定是指溢流阀开启 (流量为 15L/min) 时的压力;

安装尺寸 INSTALLATION DIMENSIONS

Unit=Millimeters

