

LPUV-10-3C

液控卸荷阀

说明 DESCRIPTION

A cartridge-style poppet-type, normally closed, pilot unloading valve

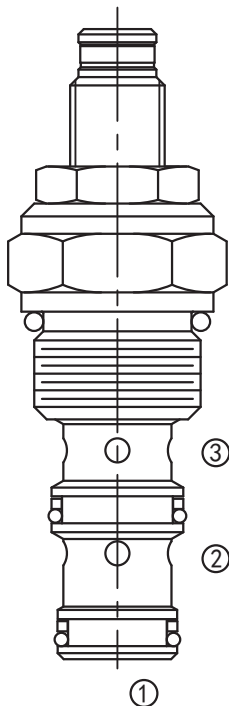
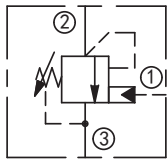
座阀式液控卸荷阀

工作 OPERATION

In its steady state, the valve blocks flow from port ② to port ③, until either the predetermined spring setting has been reached at port ②, or an external pilot has been applied to port ①. At this time flow is then allowed from port ② to port ③. Since the spring chamber is vented at port ③, back pressure at port ③ will directly (1:1) effect the valve setting.

在稳态时，油液从②口到③口封闭，直到②口压力达到预定的弹簧设定，或者①口受到了外部先导油作用。此时，允许流量从②口流向③口。因弹簧腔连接③口，③口的背压将直接按(1:1)叠加到阀设定值上。

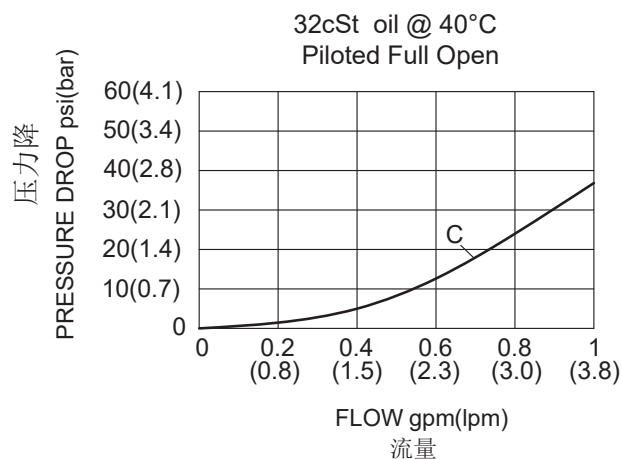
SYMBOL



技术参数 SPECIFICATIONS

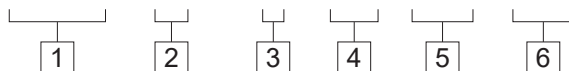
工作压力(Operating Pressure):	210bar
流量(Flow):	3.8L/min
内泄漏(Internal Leakage):	① to ②: 2drops/min(滴/分)max.at 210bar
弹簧调压范围 (Standard Spring Ranges):	20.7 to 103bar; Preset(预设): 62bar 103 to 207bar; Preset(预设): 155bar
温度(Temperature):	-40°F to +250°F(-40°C to +120°C)
过滤(Filtration):	See Page (参见) N-1
油液(Fluids):	Mineral-based fluids with viscosities of 7.4 to 420 cSt. (矿物油粘度)
插孔(Cavity):	10-3, See page M-2
阀块材料(Body Material):	Steel & Ductile iron rated to 350bar 钢和球铁允许使用最大压力350bar

压力 - 流量曲线 PRESSURE DROP VS.FLOW



订货代号 TO ORDER

LPUV - 10 - 3C - * * / ** - * ***



- | | | |
|--|--|--|
| <p>1 功能
LPUV= 液控卸荷阀
Pilot Unloading Valve</p> | <p>4 弹簧调压范围 Spring Ranges
15=300-1500psi(20.7-103bar)
Preset:900psi(62bar)
30=1500-3000psi(103-207bar)
Preset:2250psi(155bar)</p> | <p>6 阀块油口 Body Porting
空白 Blank= 不带阀块 None
6T=SAE6
8T=SAE8
2G=G 1/4
3G=G 3/8</p> |
| <p>2 规格 Size
10=10 规格</p> | <p>5 设定压力 Setting in bar
空白 Blank= 预设定 Preset
例 Example: 0250=250bar</p> | <p>※ 阀块详见章节 K-5
其它螺纹油口也是可选择的
Other Porting is Available</p> |
| <p>3 卸荷 / 负荷比率
Unload/Reload Pressure Ratio
C=85%</p> | | |

E

安装尺寸 **INSTALLATION DIMENSIONS**

Unit=Millimeters

