

LPSRV2-12

先导式溢流阀

说明 DESCRIPTION

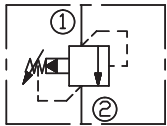
A cartridge-style pilot-operated spool-type relief valve
先导滑阀式溢流阀

工作 OPERATION

The valve prevents flow from ① to ② until pressure at ① exceeds the set crack pressure and opens the pilot section. The pilot flow creates a pressure differential across the spool which causes the valve to open allowing flow from ① to ② protecting the circuit from over pressurization.

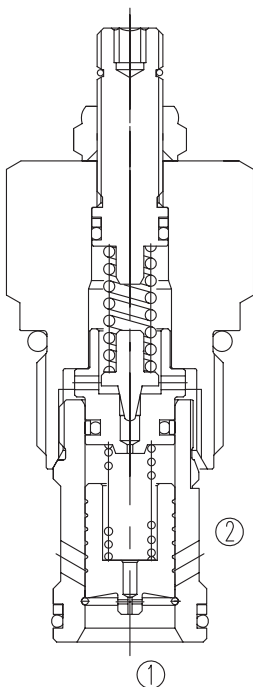
阀体①口和②口不通，直到①口压力超过设定压力且打开先导阀芯。这样，先导阀芯引起主阀芯两端压力差的变化，压力差达到一定时，①口和②口互通。

SYMBOL

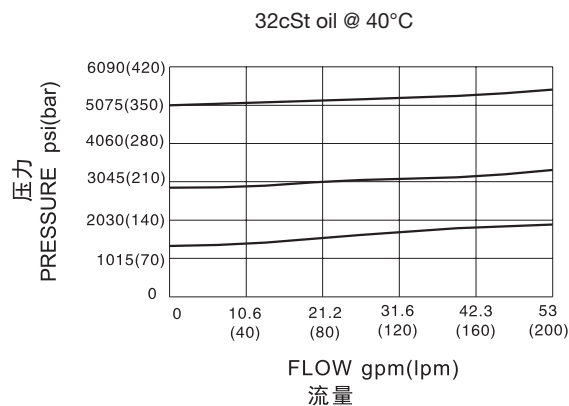


技术参数 SPECIFICATIONS

最大工作压力(Max.Operating Pressure):	Port①: 420bar
最大允许压力(Max.Pressure Admitted):	Port②: 140bar
流量(Flow):	See PRESSURE DROP VS. FLOW graph.
内泄漏(Internal Leakage):	170 cc/min. max. to 80% of nominal setting
闭合压力(Reseat Pressure):	85% of crack pressure 开启压力 (crack pressure at 0.95 lpm /0.25 gpm)
弹簧调压范围(Standard Spring Ranges):	35 to 140 bar; preset 预设定:100 bar 70 to 280 bar; preset 预设定:200 bar 140 to 420 bar: preset 预设定:210 bar
温度(Temperature):	-40°F to +250°F(-40°C to +120°C)
过滤(Filtration):	See page (参见) N-1
油液(Fluids):	Mineral-based fluids with viscosities of 7.4 to 420 cSt.(矿物油粘度)
插孔(Cavity):	12-2, See page M-3
阀块材料(Body Material):	Steel & Ductile iron rated to 350bar 钢和球铁允许使用最大压力350bar



压力 - 流量曲线 PRESSURE DROP VS.FLOW



订货代号 TO ORDER

LPSRV2 - 12 - * * / ** - * ***

┌───┐
┌──┐
┌──┐
┌──┐
┌──┐

1
2
3
4
5

- | | | |
|--|--|--|
| <p>1 功能
LPSRV2= 先导式溢流阀
Pilot-Operated Spool-type
Relief Valve</p> | <p>3 弹簧调压范围 Spring Ranges
20=500-2000psi(35-140bar)
Preset:1450psi(100bar)
40=1000-4000psi(70-280bar)
Preset:2900psi(200bar)
60=2000-6000psi(140-420bar)
Preset:3000psi(210bar)</p> | <p>4 设定压力 Setting In Bar
空白 Blank= 预设定 Preset
例 Example:0200=200bar</p> |
| <p>2 规格 Size
12=12 规格</p> | <p>5 阀块油口 Body Porting
空白 Blank= 不带阀块 None
10T=SAE10
12T=SAE12
6G=G 3/4
8G=G 1</p> | |

※ 阀块详见章节 K-8
其它螺纹油口也是可选择的
Other Porting is Available

E

安装尺寸 INSTALLATION DIMENSIONS

Unit=Millimeters

