

LPS-10-43

顺序阀

说明 DESCRIPTION

A cartridge-style, pilot-operated spool-type sequence valve with external pilot and internal spring chamber drain

外控内排，滑阀型顺序阀

工作 OPERATION

In neutral (unpiloted), the valve allows flow to pass bi-directionally from port ③ to port ②, while blocking at port ④. The spring chamber is constantly drained at port ④.

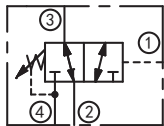
Upon attainment of a predetermined pressure at port ①, the spool shifts to close port ③ to port ②, while opening port ③ to port ④.

Note: the back-pressure at port ④ will directly add to the spring setting value.

当在初始位置（无液控）时，允许油液在油口③和②之间双向流动，同时④口关闭。弹簧腔与油口④相通。当①处的压力达到阀的预设值，阀芯移动，③口与②口不通，同时③口与④口接通。

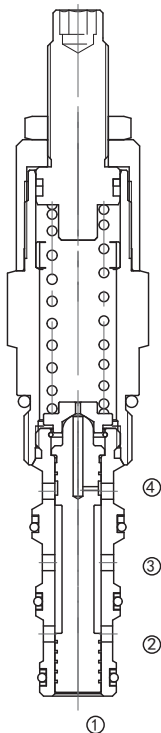
注意④口的背压按 1:1 地叠加到阀的设定压力上。

SYMBOL

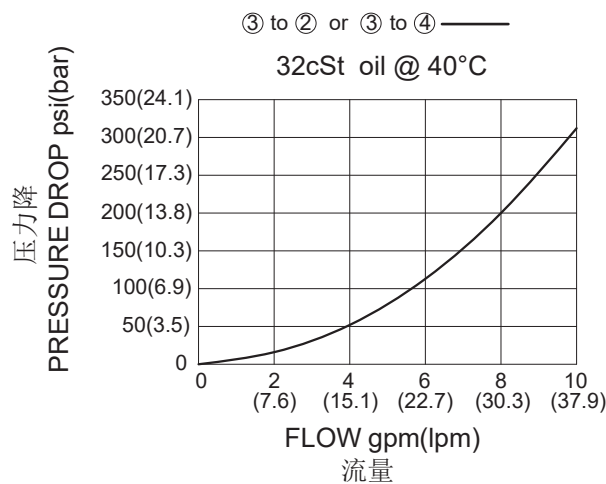


技术参数 SPECIFICATIONS

| | |
|---------------------------------|--|
| 工作压力(Operating Pressure): | ports ①、②、③: 240bar, port ④: 69Bar |
| 流量(Flow) : | See PRESSURE DROP VS.FLOW graph. |
| 内泄漏(Internal Leakage): | 82ml/min.max. to 85% of nominal setting |
| 弹簧调压范围(Standard Spring Ranges): | 2.8 to 27.6 bar; preset预设: 14bar 15.2 to 151.7 bar; preset预设: 76bar |
| 温度(Temperature): | -40°F to +250°F(-40°C to +120°C) |
| 过滤(Filtration): | See Page (参见) N-1 |
| 油液(Fluids): | Mineral-based fluids with viscosities of 7.4 to 420 cSt. (矿物油粘度) |
| 插孔(Cavity): | 10-4,See page M-2 |
| 阀块材料(Body Material): | Steel & Ductile iron rated to 350bar 钢和球铁允许使用最大压力350bar |



压力 - 流量曲线 PRESSURE DROP VS.FLOW



订货代号 TO ORDER

LPS - 10 - 43 - * * - */ ** - * ***

1
2
3
4
5
6

1 功能

LPS= 顺序阀
Pilot-operated Spool-type
Sequence Valve

2 规格 Size

10=10 规格

3 弹簧调压范围 Spring Ranges

4=40-400psi(2.8-27.6bar)
Preset:200psi(14bar)
21=220-2200psi(15.2-151.7bar)
Preset:1100psi(76bar)

4 调节 Adjustment

K= 调节手轮 1-1/2'Dia Knob
空白 Blank=1/4' 内六角调节杆
for 1/4' Hex Allen Head

5 设定压力 Set In Bar

空白 Blank= 预设定 Preset
例 Example:0120=120bar

6 阀块油口 Body Porting

空白 Blank= 不带阀块 None
6T=SAE6
8T=SAE8
2G=G 1/4
3G=G 3/8

※ 阀块详见章节 K-6
其它螺纹油口也是可选择的
Other Porting is Available

E

安装尺寸 INSTALLATION DIMENSIONS

Unit=Millimeters

