

LPPR2-10

先导式减压阀 (无溢流功能)

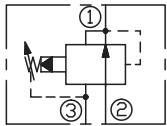
说明 DESCRIPTION

A cartridge-style pilot-operated pressure reducing valve
先导式减压阀

工作 OPERATION

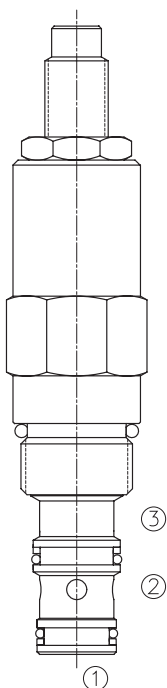
In its steady state, the valve allows flow to pass from ② to ①, with the spring chamber constantly drained at ③. On attachment of a pre-determined pressure at ①, the cartridge shifts to restrict input flow at ②, thereby regulating pressure at ①. 在①口的压力达到弹簧设定的压力时, 从②到①减压。弹簧腔内排到③口。

SYMBOL

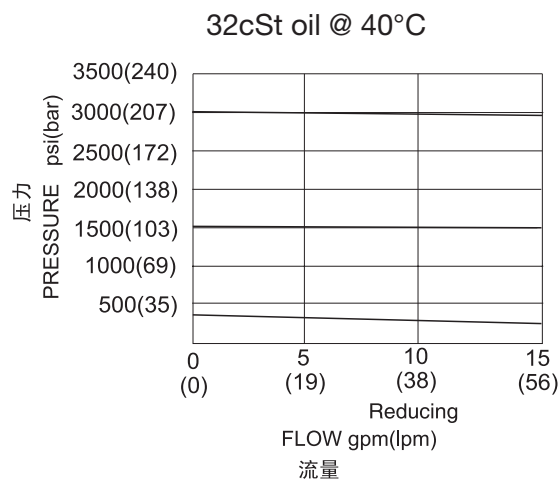


技术参数 SPECIFICATIONS

工作压力(Operating Pressure):	207bar
流量(Flow):	See PRESSURE DROP VS. FLOW graph.
内泄漏(Internal Leakage):	from ② to ③ (内泄漏 ②到③) 82 cc/min. max. at 85% of crack pressure
弹簧调压范围(Standard Spring Ranges):	6.9-27.6 bar, preset 预设: 13.5bar 10.3- 103 bar, preset 预设: 51bar 27.6- 207 bar, preset 预设: 103bar
温度(Temperature):	-40°F to +250°F (-40°C to +120°C)
过滤(Filtration):	See page (参见) N-1
油液(Fluids):	Mineral-based fluids with viscosities of 7.4 to 420 cSt. (矿物油粘度)
插孔(Cavity):	10-3, See page M-2
阀块材料(Body Material):	6061-T6 aluminum alloy rated to 207bar, Steel & Ductile iron rated to 350bar 6061-T6铝, 允许使用最大压力207bar 钢和球铁允许使用最大压力350bar



压力 - 流量曲线 PRESSURE DROP VS. FLOW



订货代号 TO ORDER

LPPR2 - 10 - * * - * / ** - * ***

┌───┐
┌───┐
┌───┐
┌───┐
┌───┐
┌───┐

1
2
3
4
5
6

- | | | |
|---|---|---|
| <p>1 功能
LPPR2= 先导式减压阀
Pilot-operated
Pressure Reducing Valve</p> | <p>3 弹簧调压范围 Spring Ranges
4=100-400psi(6.9-27.6bar)
Preset:196psi(13.5bar)
15=150-1500psi(10.3-103bar)
Preset:740psi(51bar)
30=400-3000psi(27.6-207bar)
Preset:1490psi(103bar)</p> | <p>5 设定压力 Setting In Bar
空白 Blank= 预设定 Preset
例 Example:0100=100bar</p> |
| <p>2 规格 Size
10=10 规格</p> | <p>4 调节 Adjustment
K= 调节手轮 1-1/2'Dia Knob
内六角调节杆 (Omit for 1/4 Hex Allen head)</p> | <p>6 阀块油口 Body Porting
空白 Blank= 不带阀块 None
6T=SAE6
8T=SAE8
2G=G 1/4
3G=G 3/8</p> |

※ 阀块详见章节 K-5
其它螺纹油口也是可选择的
Other Porting is Available

安装尺寸 INSTALLATION DIMENSIONS

Unit=Millimeters

