

LPD2-10-34

二位三通液控换向阀 (常闭型)
透大气

说明 DESCRIPTION

A cartridge-style 2-way pilot-operated spool-type external-vent directional valve

二位，三通，外控外排，螺纹插装方向阀

工作 OPERATION

Unpiloted, the valve blocks flow from ③ to ② bidirectionally.

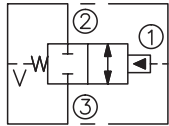
V is a spring chamber vent-to-atmosphere, which is internally O-ring sealed from the cartridge flow paths.

On remote pilot signal at ①, the valve shifts to open ② to ③ bidirectionally.

Because of the vented spring chamber, the cartridge may be fully pressurized at any port without affecting required pilot pressure.

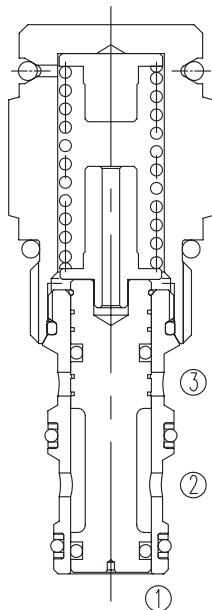
无液控时，此阀截止油液从③向②双向流动。V是可通大气的弹簧腔，该腔采用O型圈密封内部油道，防止油液流入该腔。当远端液控信号到达①时，阀芯移动，②到③双向接通。由于采用带泄油孔的弹簧室，因此可以在任何油口对插件完全加压，而不会影响所需的液控压力。

SYMBOL

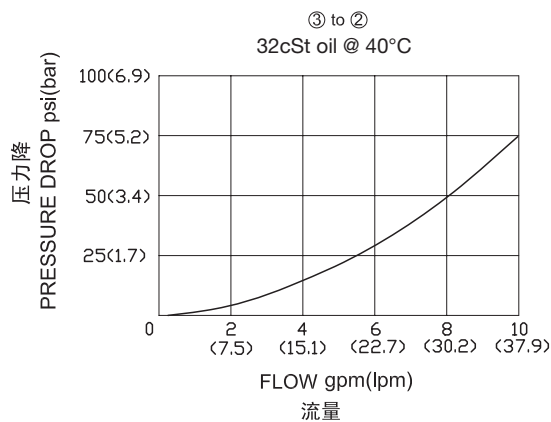


技术参数 SPECIFICATIONS

工作压力(Operating Pressure):	240bar
流量(Flow):	See PRESSURE DROP VS.FLOW graph.
内泄漏(Internal Leakage):	82cc/min.(毫升/分) max. at 240bar
先导口压力要求(Pilot Pressure Required):	阀芯完全换向(To Full Spool Shift): 采用4.1bar弹簧 (for 4.1bar spring) : 4.7bar 采用7.6bar弹簧 (for 7.6bar spring) : 8.6bar
温度(Temperature):	-40°F to +250°F(-40°C to +120°C)
过滤(Filtration):	See page (参见) N-1
油液(Fluids):	Mineral-based fluids with viscosities of 7.4 to 420 cSt.(矿物油粘度)
插孔(Cavity):	10-3,See page M-2
阀块材料(Body Material):	6061-T6 aluminum alloy rated to 207bar, Steel & Ductile iron rated to 350bar 6061-T6铝,允许使用最大压力207bar 钢和球铁允许使用最大压力350bar



压力 - 流量曲线 PRESSURE DROP VS.FLOW



订货代号 TO ORDER

LPD2 - 10 - 34 - * * - * * - * *

1 功能
 LPD2= 二位二通液控换向阀
 Piloted Two-way Spool
 Directional Valve

2 规格 Size
 10=10 规格

3 弹簧调压范围 Spring Ranges
 4=40psi(2.8bar)
 6=60psi(4.1bar)
 11=110psi(7.6bar)
 17=170psi(11.7bar)

4 油封 Seal Kits
 N= 丁晴橡胶 (标准型) Buna N(Std)
 NS= 丁晴橡胶 (活塞上带密封圈)
 最低弹簧压力为 7.6bar
 Buna N with sealed piston
 110psi(7.6bar)minimum spring
 V= 氟橡胶 V-Fluorocarbon
 VS= 氟橡胶 (活塞上带密封圈)
 最低弹簧压力为 7.6bar
 VS-Fluorocarbon with sealed piston
 110psi(7.6bar)minimum spring

5 阀块油口 Body Porting
 空白 Blank= 不带阀块 None
 6T=SAE6
 8T=SAE8
 2G=G 1/4
 3G=G 3/8

※ 阀块详见章节 K-5
 其它螺纹油口也是可选择的
 Other Porting is Available

安装尺寸 INSTALLATION DIMENSIONS

Unit=Millimeters

