

LPD2-10-4

二位三通液控换向阀
透大气

说明 DESCRIPTION

A cartridge-style 3-way pilot-operated spool-type external-vent directional valve

二位，三通，外控外排，螺纹插装方向阀

工作 OPERATION

On no remote pilot signal at ①, the valve allows flow from ③ to ② bi-directionally, while flow is blocked at ④, spring chamber vent-to-atmosphere, which is internally O-ring sealed from the cartridge flow paths.

On remote pilot signal at ①, the valve shifts to open from ③ to ④, while blocking flow at ②.

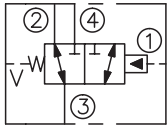
Because of the vented spring chamber, the cartridge may be fully pressurized at any port without affecting required pilot pressure.

当①口没有先导压力信号时，③到②双向通，④口不通。此阀弹簧腔通大气，阀内弹簧腔与油路用O形圈密封。

当①口有先导压力信号时，阀芯换向，③到④通，②口不通。

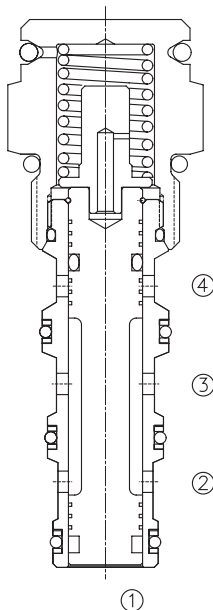
由于弹簧腔通大气，此阀任意油口的压力不会影响到先导压力。

SYMBOL

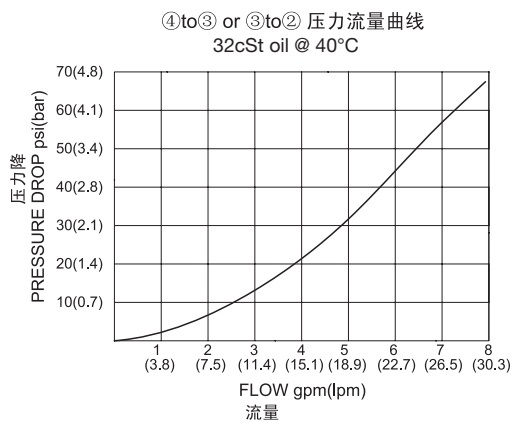


技术参数 SPECIFICATIONS

工作压力(Operating pressure):	250bar
流量(Flow):	See PRESSURE DROP VS.FLOW graph.
内泄漏(Internal Leakage):	82 cc/min. max. at 250 bar
先导口压力要求(Pilot Pressure Required):	To Spool Crossover 7.6 bar(110psi) To Full Spool Shift 8.6 bar(125psi)
温度(Temperature):	-40°F to +250°F(-40°C to +120°C)
过滤(Filtration):	See page (参见) N-1
油液(Fluids):	Mineral-based fluids with viscosities of 7.4 to 420 cSt.(矿物油粘度)
插孔(Cavity):	10-4, See page M-2
阀块材料(Body Material):	6061-T6 aluminum alloy rated to 207bar, Steel & Ductile iron rated to 350bar 6061-T6铝,允许使用最大压力207bar 钢和球铁允许使用最大压力350bar



压力 - 流量曲线 PRESSURE DROP VS.FLOW



订货代号 TO ORDER

LPD2 - 10 - 4 - * * - * - * *

1

2

3

4

5

1 功能

LPD2= 二位三通液控换向阀
Piloted Three-way Spool Directional Valve

2 规格 Size

10-4=10-4 规格

3 弹簧调压 Bias spring

4=40psi(2.75bar)
6=60psi(4.1bar)
8=80psi(5.5bar)
11=110psi(7.6bar)
16=160psi(11bar)

4 油封 Seal Kits

N= 丁晴橡胶 (标准型) Buna N(Std)
NS= 丁晴橡胶 (活塞上带密封圈)
最低弹簧压力为 7.6bar
Buna N with sealed piston
110psi(7.6bar)minimum spring
V= 氟橡胶 V-Fluorocarbon
VS= 氟橡胶 (活塞上带密封圈)
最低弹簧压力为 7.6bar
VS-Fluorocarbon with sealed piston
110psi(7.6bar)minimum spring

5 阀块油口 Body Porting

空白 Blank= 不带阀块 None
6T=SAE6
8T=SAE8
2G=G 1/4
3G=G 3/8

※ 阀块详见章节 K-6
其它螺纹油口也是可选择的
Other Porting is Available

D

安装尺寸 INSTALLATION DIMENSIONS

Unit=Millimeters

