

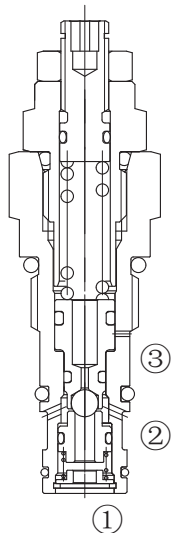
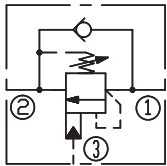
# 5006-4

## 平衡阀

### 说明 DESCRIPTION

A cartridge-style, counterbalance valve  
平衡阀

### SYMBOL



### 工作 OPERATION

Counterbalance valves with pilot assist are meant for control on overrunning load. The check valve allows free flow from port ② to port ① while a direct-acting, pilot-assisted relief valve controls flow from port ① to port ②. Pilot assist at port ③ lowers the effective setting of the relief valve at a rate determined by the pilot ratio.

带先导开启平衡阀用于控制超越负载工况。油液从②口到①口单向自由流动；油液经直动，先导辅助从①口溢流到②口，③口是溢流辅助控制口，按控制比降低溢流功能的有效设定值。

### 特性 FEATURES

- Counterbalance valves should be set at least 1.3 times the maximum load induced pressure.

最大设定压力至少为最大负载压力的 1.3 倍。

- Backpressure at port ② adds to the effective relief setting at a ratio of 1 plus the pilot ratio times the backpressure.

②口的背压按“控制比 +1”的倍数加到溢流阀的设定值上即增加值 = (1+ 控制比) × 压力值。

- Reseat exceeds 85% of set pressure when the valve is standard set. Setting lower than the standard set pressure may result in lower reseal percentages.

标准设定时，闭合压力值大于设定压力值的 85%；低于标准设定，则闭合压力值的百分比相应降低。

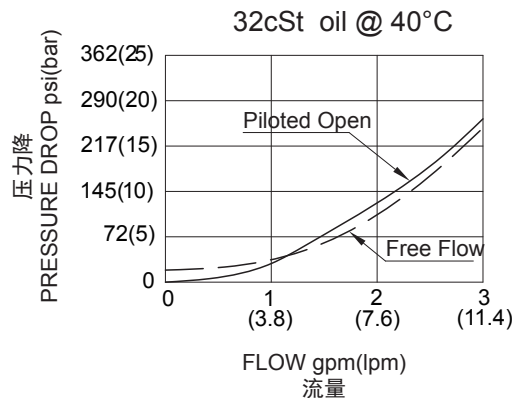
- Factory pressure setting established at 30cc/min(2 in3/min).

工厂的设定是指当溢流阀开启（流量为 30cc/min）时的压力。

### 技术参数 SPECIFICATIONS

最大工作压力 (Max. Operating Pressure):	350bar
最大负载 (Max. Recommended Load Pressure at Max. Setting):	270bar
流量 (Flow) :	See PRESSURE DROP VS.FLOW graph.
内泄漏 (Internal Leakage):	5 drops/min.(滴/分) max.
控制比 (Pilot Rate):	4:1
弹簧调压范围 (Standard Spring Ranges):	13.8 to 350 bar; preset预设定: 228bar
单向阀开启压力 (Crack Pressure):	1.7bar
温度 (Temperature):	-40°F to +250°F(-40°C to +120°C)
过滤 (Filtration):	See Page (参见) N-1
油液 (Fluids):	Mineral-based fluids with viscosities of 7.4 to 420 cSt. (矿物油粘度)
插孔 (Cavity):	HYDAC FC06-3, See page M- 29
阀块材料 (Body Material):	Steel & Ductile iron rated to 350bar 钢和球铁允许使用最大压力350bar

### 压力 - 流量曲线 PRESSURE DROP VS.FLOW



## 订货代号 TO ORDER

50 06 - 4 - \*\*\*\* - \*\*

└─┬─┘ └─┬─┘ └─┬─┘ └─┬─┘ └─┬─┘

1 2 3 4 5

**1** 功能

50= 平衡阀  
Counterbalance Cartridge Valve

**2** 规格 Size

06=06 规格

**3** 控制比 Pilot Ratio

4=4:1

**4** 设定压力 Set In Bar

空白 Blank= 预设设定 Preset:228bar  
例 Example:0160=160Bar

**5** 阀块油口 **Body Porting**

空白 Blank= 不带阀块 None  
4T=SAE4  
6T=SAE6  
2G=G 1/4  
3G=G 3/8

其它螺纹油口也是可选择的  
Other Porting is Available



## 安装尺寸 INSTALLATION DIMENSIONS

Unit=Millimeters

