

LLPDC

常开调节单元

说明 DESCRIPTION

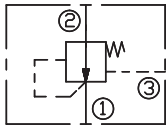
A cartridge-style normally-open, modulating element
常开, 调节单元

工作 OPERATION

Normally open modulating elements without an internal orifice act as a restrictive compensator to maintain a constant pressure drop across an orifice, regardless of variations in upstream or downstream pressure.

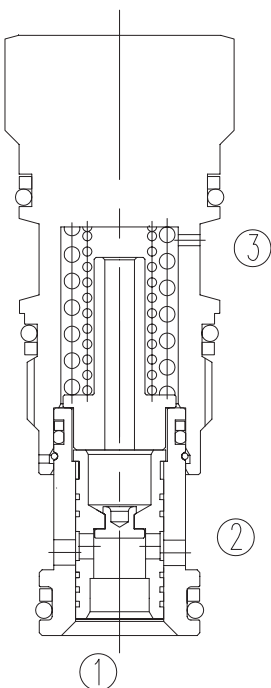
此阀为无内置节流孔的常开调节单元, 用来作为限流压力补偿器以确保流过节流孔的压降保持恒定, 不受进出口压力变化影响。

SYMBOL

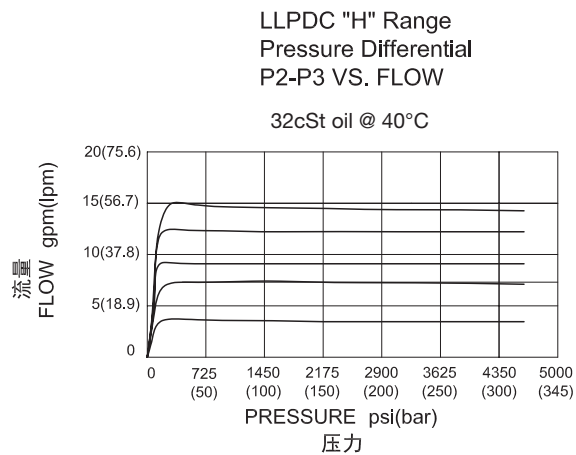


技术参数 SPECIFICATIONS

最大工作压力(Max.Operating Pressure):	350bar
流量(Capacity):	See PRESSURE DROP VS.FLOW graph.
温度(Temperature):	-40°F to +250°F(-40°C to +120°C)
过滤(Filtration):	See page (参见) N-1
油液(Fluids):	Mineral-based fluids with viscosities of 7.4 to 420 cSt.(矿物油粘度)
插孔(Cavity):	SUN T-11A, See page M-6
阀块材料(Body Material):	Steel & Ductile iron rated to 350bar 钢和球铁允许使用最大压力350bar



压力 - 流量曲线 PRESSURE DROP VS.FLOW



订货代号 TO ORDER

LLP D C - * * * - * *

1 功能
 LLP= 常开, 调节单元
 Normally Open, Modulating Element

2 流量 Capacity
 D=60L/min

3 导压口
 C= 外部导压

4 控制方式 Control
 X= 不可调 Not Adjustment

5 压差 Differential Pressure
 H=200psi(14bar)
 D=50psi(3.5bar)
 F=100psi(7bar)
 G=150psi(10.5bar)

6 油封 Seal
 N= 丁晴橡胶 Buna N
 V= 氟橡胶 Viton

7 阀块油口 Body Porting
 空白 Blank= 不带阀块 None
 6T=SAE 6
 8T=SAE 8
 3G=G 3/8
 4G=G 1/2

※ 阀块详见章节 K-17—K-22
 其它螺纹油口也是可选择的
 Other Porting is Available

安装尺寸 INSTALLATION DIMENSIONS

Unit=Millimeters

H

