

# LFR-M14

流量控制阀，压力补偿型（固定节流孔）

## 说明 DESCRIPTION

A cartridge-style, non-adjustable, pressure-compensated flow control valve

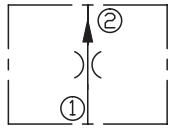
压力补偿型，插装式流量阀

## 工作 OPERATION

The valve maintains a constant flow within specified accuracies from ① to ② regardless of downstream load pressure. When flow produces a minimum predetermined pressure differential across the compensator spool control orifice, the spool shifts against the spring force to throttle the flow and maintain the flow setting. Reverse flow is not regulated.

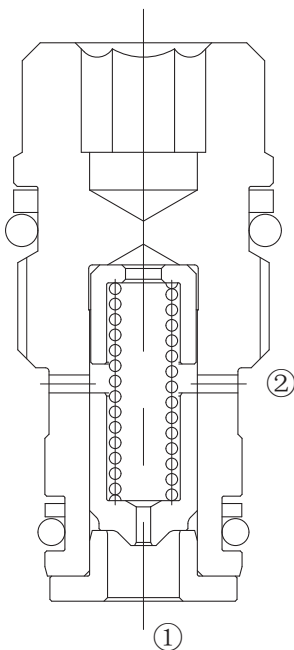
不管负载压力如何变化，从①到②口的流量都能保持在一定的范围内。当油通过固定节流孔时，引起极小的压力差，阀芯开始响应负载变化，通过压力补偿，可维持精确的流量。油液从②到①反方向流动，没有压力补偿。

## SYMBOL

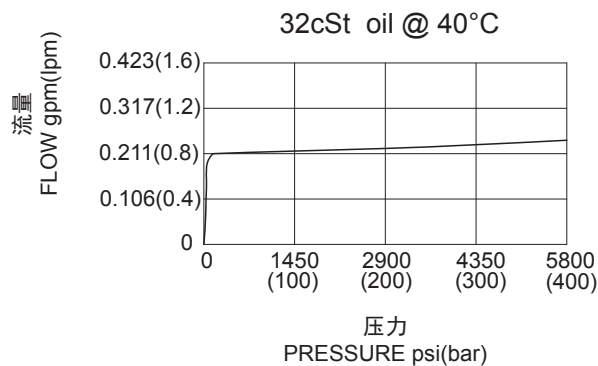


## 技术参数 SPECIFICATIONS

最大工作压力 (Max. Operating Pressure):	420bar
流量设定 (Flow setting) :	0.4-0.8-1.2 l/min.
流量控制精度 (Flow Maintenance Accuracy):	±15%
温度 (Temperature):	-40°F to +250°F(-40°C to +120°C)
过滤 (Filtration):	See Page (参见) N-1
油液 (Fluids):	Mineral-based fluids with viscosities of 7.4 to 420 cSt. (矿物油粘度)
插孔 (Cavity):	Rexroth-R/DBD.4k, See page M-14
阀块材料 (Body Material):	Steel & Ductile iron rated to 350bar 钢和球铁允许使用最大压力350bar



## 压力 - 流量曲线 PRESSURE DROP VS.FLOW



## 订货代号 TO ORDER

**LFR - M14 - \*\* - \*\***

┌───┐
┌───┐
┌───┐
┌───┐  
└───┘
└───┘
└───┘
└───┘  
1
2
3
4

<p><b>1</b> 功能 LFR= 压力补偿型, 插装式流量阀 Non-adjustable, Pressure-compensated Flow control Valve</p>	<p><b>3</b> 流量设定 Flow Setting M0.4=0.4lpm M0.8=0.8lpm M1.2=1.2lpm</p>	<p><b>4</b> 阀块油口 Body Porting 空白 Blank= 不带阀块 None 4T=SAE4 6T=SAE6 2G=G 1/4 3G=G 1/8</p>
<p><b>2</b> 规格 Size M14=M14X1 规格</p>		

其它螺纹油口也是可选择的  
Other Porting is Available

F

## 安装尺寸 INSTALLATION DIMENSIONS

Unit=Millimeters

