

LFRDA

流量控制阀，压力补偿型（弹簧可调节）

说明 DESCRIPTION

A cartridge-style adjustable pressure-compensated flow control valve

压力补偿可调型，插装式流量阀

工作 OPERATION

The valve maintains a constant flow rate from ③ regardless of load pressure changes in the system downstream of ③, or in the bypass leg at ②. The valve will pressure-compensate once a minimum pressure drop (determined by spring adjustment setting) is achieved from ① to ③. Bypass port ② maybe fully pressurized. The cartridge may be adjusted to $\pm 25\%$ of normally setting.

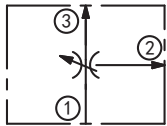
Flow out of priority port ③ may vary based on input flow amount, particularly with lower temperatures and increased fluid viscosities.

不管③口负载压力或旁路②口负载压力如何变化，从③口流出的流量维持不变；油液从①口到③口的压降一旦达到最小值（取决于弹簧的设定值），阀芯将开始压力补偿。

旁路②口可作为工作口。流量的调整范围为名义流量设定值的 $\pm 25\%$ 。

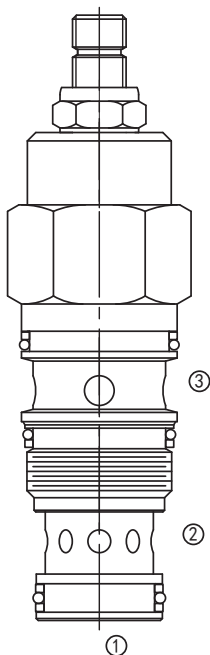
基于进油量的不同，特别在低温和油液粘度增加条件下，从优先油口③流出的油液可能有差别。

SYMBOL



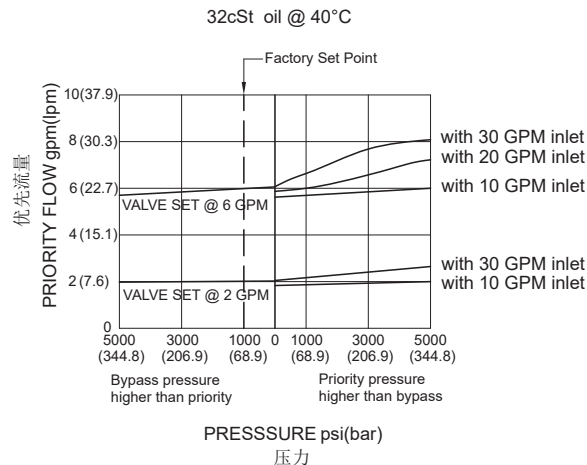
技术参数 SPECIFICATIONS

工作压力(Operating Pressure):	ports ①&②: 350bar port ③: 210bar
最大输入流量(Max. Input Flow):	120L/min
流量设定(Flow Setting):	0.4-45lpm
温度(Temperature):	-40°F to +250°F(-40°C to +120°C)
过滤(Filtration):	See Page (参见) N-1
油液(Fluids):	Mineral-based fluids with viscosities of 7.4 to 420 cSt. (矿物油粘度)
插孔(Cavity):	SUN T-2A, See page M-6
阀块材料(Body Material):	Steel & Ductile iron rated to 350bar 钢和球铁允许使用最大压力350bar



③口油液切断，则②口也无油液

压力 - 流量曲线 PRESSURE DROP VS.FLOW



订货代号 TO ORDER

LFR D A - * A * - ** - **

1
2
3
4
5
6
7

- | | | |
|--|---|---|
| <p>1 功能
LFR= 压力补偿可调型, 插装式流量阀
Adjustable Pressure-compensated
Flow Control Valve</p> | <p>4 流量设定范围 Flow Setting Range
A=0.1-12gpm(0.4-45L/min)
可更换节流孔 Replaceable Orifice</p> | <p>7 阀块油口 Body Porting
空白 Blank= 不带阀块 None
6T=SAE6
8T=SAE8
2G=G 1/4
3G=G 3/8</p> |
| <p>2 流量 Capacity
D=45 L/Min</p> | <p>5 油封 Seal Kits
N= 丁晴橡胶 Buna-N
V= 氟橡胶 Viton</p> | <p>※ 阀块详见章节 K-23
其它螺纹油口也是可选择的
Other Porting is Available</p> |
| <p>3 控制方式 Control
L= 标准螺钉调节
Standard Screw Adjustment</p> | <p>6 流量设定 Flow Setting
M6.5=4.88 - 8.12 lpm</p> | |

F

安装尺寸 INSTALLATION DIMENSIONS

Unit=Millimeters

