

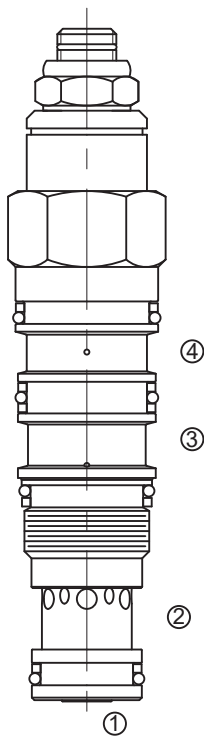
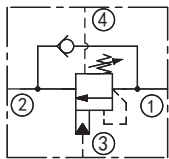
LCWCG

平衡阀

说明 DESCRIPTION

A cartridge-style vented counterbalance valve
带外接口平衡阀

SYMBOL



工作 OPERATION

Vented counterbalance valves with pilot assist are meant to control an overrunning load. The check valve allows free flow from port ② to port ① while a direct-acting, pilot-assisted relief valve controls flow from port ① to port ②. Pilot assist at port ③ lowers the effective setting of the relief valve at a rate determined by the pilot ratio. Backpressure at port ② does not affect the valve setting because the spring chamber references the vent (port ④).

带先导协助开启的带外接口型平衡阀用于控制超驰负载工况。油液从②口到①口单向自由流动；油液经直动，先导辅助从①口溢流到②口，③口是溢流辅助控制口，按控制比降低溢流功能的有效设定值。因弹簧腔通外接口（④口），所以②口的背压不会影响阀的设定值。

特性 FEATURES

- Counterbalance valves should be set at least 1.3 times the maximum load induced pressure.

最大设定压力至少为最大负载压力的 1.3 倍。

- Pressure at port ④ is added to the effective relief setting at a rate of 1 plus the pilot ratio times the pressure.

④口的压力按“控制比 +1”的倍数加到溢流阀的设定值上即增加值 = (1+ 控制比) × 压力值。

- Reseat exceeds 85% of set pressure when the valve is standard set. Settings lower than the standard set pressure may result in lower reseal percentages.

标准设定时，闭合压力值大于设定压力值的 85%；低于标准设定，则闭合压力值的百分比相应降低。

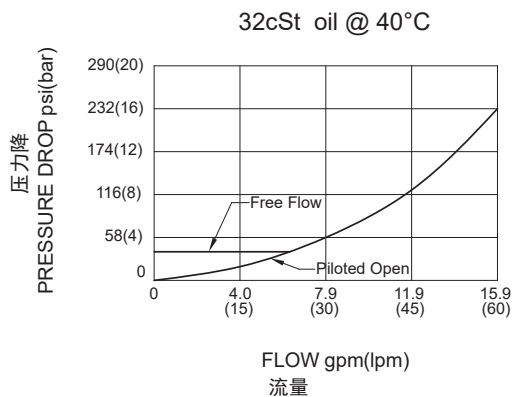
- Factory pressure setting established at 30cc/min(2in3/min)

工厂的设定是指当溢流阀开启（流量为 30cc/min）时的压力。

技术参数 SPECIFICATIONS

最大设定值(MAX. Setting):	420bar
最大负载(Max. Recommended Load Pressure at Max. Setting):	320bar
流量(Flow):	See PRESSURE DROP VS. FLOW graph.
内泄漏(Internal Leakage):	5 drops/min(滴/分)
控制比(Pilot Ratio):	5:1
单向阀开启压力 (Check Cracking Pressure) :	2.8bar
温度(Temperature):	-40°F to +250°F (-40 °C to +120 °C)
过滤(Filtration):	See page (参见) N-1
油液(Fluids):	Mineral-based fluids with viscosities of 7.4 to 420 cSt.(矿物油粘度)
插孔(Cavity):	T-21A, See page M-32
阀块材料(Body Material):	6061-T6 aluminum alloy rated to 207Bar, Steel & Ductile iron rated to 350Bar 6061-T6铝,允许使用最大压力207Bar 钢和球铁允许使用最大压力350Bar

压力 - 流量曲线 PRESSURE DROP VS.FLOW



订货代号 TO ORDER

LCW C G - * * * - * *

1
2
3
4
5
6
7

<p>1 功能 LCW= 平衡阀 Counterbalance Cartridge Valve</p>	<p>5 弹簧调压范围 Spring Ranges G=2000-6000psi(140-420bar) Preset:4000psi(280bar) F=1000-2500psi(70-175bar) Preset:2000psi(140bar)</p>	<p>7 阀块油口 Body Porting 空白 Blank= 不带阀块 None 6T=SAE6 8T=SAE8 3G=G 3/8 4G=G 1/2</p>
<p>2 流量 Flow C=60L/min</p>	<p>6 油封 Seal Kits N= 丁晴橡胶 Buna N V= 氟橡胶 Viton</p>	<p>其它螺纹油口也是可选择的 Other Porting is Available</p>
<p>3 控制比 Pilot Ratio G=5:1</p>		
<p>4 控制方式 Control L= 标准螺钉调节 Standard Screw Adjustment</p>		



安装尺寸 INSTALLATION DIMENSIONS

Unit=Millimeters

