

# LCBBA/LCBBG

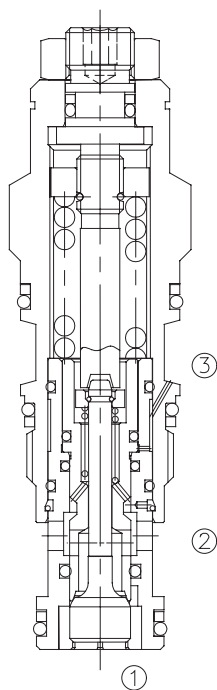
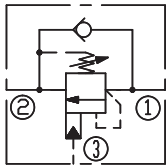
## 平衡阀

全限流型 /Restrictive

### 说明 DESCRIPTION

A cartridge-style restrictive counterbalance valve  
全限流型平衡阀

### SYMBOL



### 工作 OPERATION

Counterbalance valves with pilot assist are meant for control on overrunning load. The check valve allows free flow from port ② to port ① while a direct-acting, pilot-assisted relief valve controls flow from port ① to port ②. Pilot assist at port ③ lowers the effective setting of the relief valve at a rate determined by the pilot ratio.

带先导开启平衡阀用于控制超越负载工况。油液从②口到①口单向自由流动；油液经直动，先导辅助从①口溢流到②口，③口是溢流辅助控制口，按控制比降低溢流功能的有效设定值。

### 特性 FEATURES

- Counterbalance valves should be set at least 1.3 times the maximum load induced pressure.

最大设定压力至少为最大负载压力的 1.3 倍。

- Full clockwise setting is less than 14 bar.

完全释压情况下，设定低于 14bar。

- Backpressure at port ② adds to the effective relief setting at a ratio of 1 plus the pilot ratio times the backpressure.

②口的背压按“控制比+1”的倍数加到溢流阀的设定值上即增加值=(1+控制比)×压力值。

- Reseat exceeds 85% of set pressure when the valve is standard set. Setting lower than the standard set pressure may result in lower reseal percentages.

标准设定时，闭合压力值大于设定压力值的 85%；低于标准设定，则闭合压力值的百分比相应降低。

- Factory pressure setting established at 30cc/min(2 in<sup>3</sup>/min).

工厂的设定是指当溢流阀开启（流量为 30cc/min）时的压力。

### 技术参数 SPECIFICATIONS

最大设定值(Max. Setting):	280 bar(LCBBA) 350 bar(LCBBG)
最大负载(Max. Recommended Load Pressure at Max. Setting):	215 bar(LCBBA) 270 bar(LCBBG)

流量(Flow): See PRESSURE DROP VS.FLOW graph.

内泄漏(Internal Leakage): 5 drops/min(滴/分).

控制比(Pilot Ratio): (LCBBA) 3:1; (LCBBG) 4.5:1

温度(Temperature): -40°F to +250°F(-40°C to +120°C)

过滤(Filtration): See page (参见) N-1

油液(Fluids): Mineral-based fluids with viscosities of 7.4 to 420 cSt.(矿物油粘度)

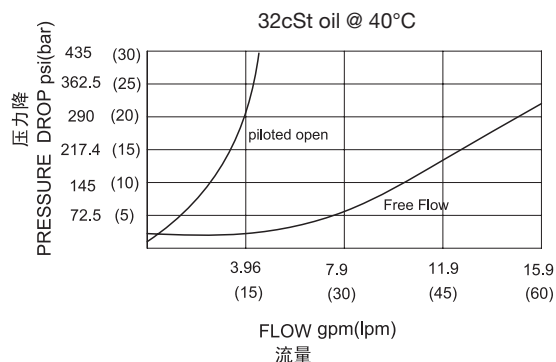
插孔(Cavity): SUN T-11A, See page M-6

阀块材料(Body Material):

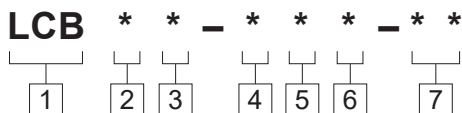
6061-T6 aluminum alloy rated to 207bar, Steel & Ductile iron rated to 350bar

6061-T6铝,允许使用最大压力207bar 钢和球铁允许使用最大压力350bar

### 压力 - 流量曲线 PRESSURE DROP VS.FLOW



## 订货代号 TO ORDER



**1 功能**  
LCB= 平衡阀  
Counterbalance Cartridge Valve

**2 流量 Flow**  
B=15L/min

**3 控制比 Pilot Ratio**  
A=3:1 G=4.5:1

### 弹簧调压 LCBBA

H=1000-4000psi(70-280bar)  
Preset:3000psi(210bar)(Check:1.7bar)  
I=400-1500psi(28-105bar)  
Preset:1000psi(70bar)(Check:1.7bar)  
A=1000-4000psi(70-280bar)  
Preset:3000psi(210bar)(Check:0.3bar)  
B=400-1500psi(28-105bar)  
Preset:1000psi(70bar)(Check:0.3bar)

**4 控制方式 Control**  
L=Standard Screw Adjustment

**5 弹簧调压范围 Spring Ranges**

**6 油封 Seal Kits**  
N= 丁晴橡胶 Buna N  
V= 氟橡胶 Viton

### 弹簧调压 LCBBG

J=2000-5000psi(140-350bar)  
Preset:3000psi(210bar)(Check:1.7bar)  
K=1000-2500psi(70-175bar)  
Preset:2000psi(140bar)(Check:1.7bar)  
G=2000-5000psi(140-350bar)  
Preset:3000psi(210bar)(Check:0.3bar)  
D=1000-2500psi(70-175bar)  
Preset:2000psi(140bar)(Check:0.3bar)

**7 阀块油口 Body Porting**  
空白 Blank= 不带阀块 None  
4T=SAE4  
6T=SAE6  
3G=G 3/8  
4G=G 1/2

※ 阀块详见章节 K-17-K-22  
其它螺纹油口也是可选择的  
Other Porting is Available

## 安装尺寸 INSTALLATION DIMENSIONS

Unit=Millimeters

### Number of Counter-clockwise Turns

全调3.75圈

