

# LDSCH

## 低压侧 (热油) 梭阀

### 说明 DESCRIPTION

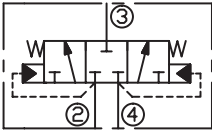
A cartridge-style low side three-position, hot oil shuttle valve  
三位, 低压优先螺纹插装式梭阀

### 工作 OPERATION

Low-side (hot oil) shuttle cartridges allow hot oil to be diverted from the low pressure side of a closed loop system. When both work ports (ports ② and ④) are at equal pressures the valve is spring-centered to an all-ports-blocked position. When one of the work ports (port ② or ④) sees a higher pressure the opposite work port is connected to the common port (port ③).

低压侧 (热油) 梭阀允许来自封闭式系统的低压侧热油回油箱: 当两工作腔 (②口和④口) 的压力相等时, 弹簧对中阀处于中位, 所有油口关闭; 当两工作腔压力不等, 低压腔的油液与③口接通。

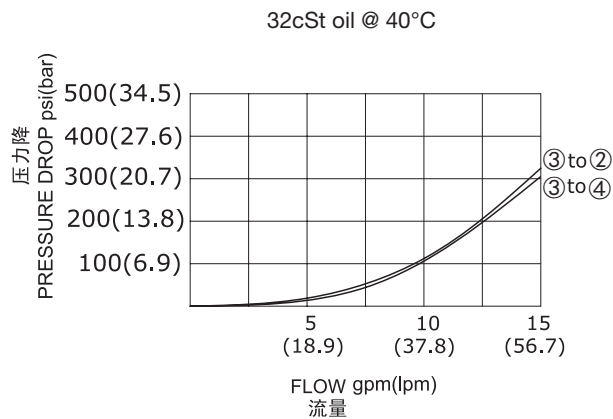
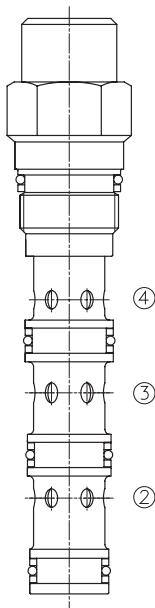
### SYMBOL



### 技术参数 SPECIFICATIONS

工作压力(Operating Pressure):	350bar
流量(Flow):	See PRESSURE DROP VS.FLOW graph.
温度(Temperature):	-40°F to +250°F(-40°C to +120°C)
过滤(Filtration):	See page (参见) N-1
油液(Fluids):	Mineral-based fluids with viscosities of 7.4 to 420 cSt.(矿物油粘度)
插孔(Cavity):	SUN T-31A, See page M-10
阀块材料(Body Material):	Steel & Ductile iron rated to 350bar 钢和球铁允许使用最大压力350bar

### 压力 - 流量曲线 PRESSURE DROP VS.FLOW



订货代号 TO ORDER

LDS \* H - X \* N



1 功能  
LDS= 低压侧梭阀 Cartridge Shuttle Valve

2 流量 Flow  
G=60L/min

3 控制方式 Control  
X= 不可调

4 换向压力 Shifting Pressure  
H:200psi(14Bar)  
G:150psi(10.5Bar)

5 油封 Seal Kits  
N= 丁晴橡胶 Buna N  
V= 氟橡胶 Viton

※ 阀块详见章节 K-27  
其它螺纹油口也是可选择的  
Other Porting is Available

D

安装尺寸 INSTALLATION DIMENSIONS

Unit=Millimeters

