

LDRD

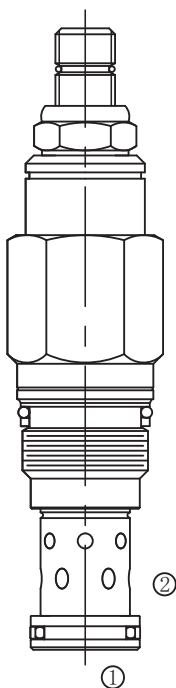
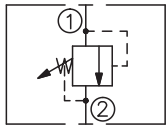
直动式溢流阀

说明 DESCRIPTION

A cartridge-style direct-acting relief valve

直动式溢流阀

SYMBOL



工作 OPERATION

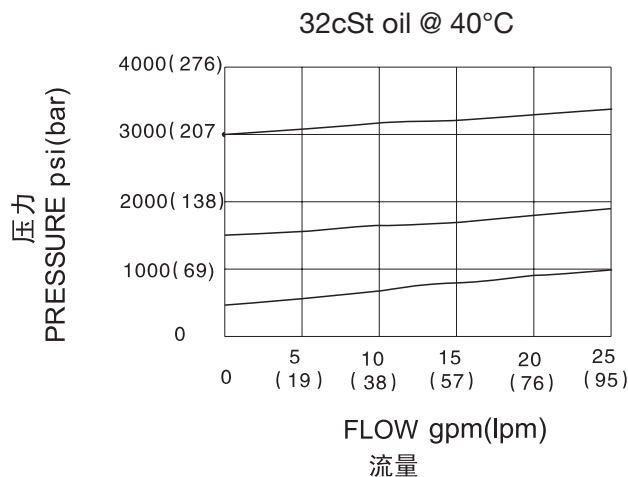
The valve is normally closed, pressure-limiting valves used to protect hydraulic components from pressure transients. When the pressure at the inlet (port ①) reaches the valve setting, the valve starts to open to tank (port ②), throttling flow to limit the pressure rise. These valves are smooth and quiet, essentially zero leak, dirt tolerant, immune to silting and are very fast.

此阀为常闭压力限制阀，常用来保护液压元件，以防止其受瞬态压力的冲击。当压力在进口（油口①）达到阀的设定值，阀开始向油箱（油口②）溢流，节流以限制压力上升。此类阀调节平稳、噪声小，基本为零泄漏，抗油污能力强，防堵塞并且响应速度快。

技术参数 SPECIFICATIONS

工作压力(Operating Pressure):	350bar
流量(Capacity):	See PRESSURE DROP VS. FLOW graph.
回座时最大泄漏(Maximum valve leakage at reseal):	10 drops/min(滴/分)
闭合压力(Reseat Pressure):	>80% of setting pressure(设定压力)
弹簧调压范围(Standard Spring Ranges):	A 35-210 bar; preset 预设定: 70 bar W 55-315 bar; preset 预设定: 70 bar B 20-105 bar; preset 预设定: 70 bar C 70-420 bar; preset 预设定: 70 bar D 14- 55 bar; preset 预设定: 28 bar S 3.5-14 bar; preset 预设定: 7 bar
温度(Temperature):	-40°F to +250°F(-40°C to +120°C)
过滤(Filtration):	See page (参见) N-1
油液(Fluids):	Mineral-based fluids with viscosities of 7.4 to 420 cSt.(矿物油粘度)
插孔(Cavity):	SUN T-10A, See page M-7
阀块材料(Body Material):	Steel & Ductile iron rated to 350bar 钢和球铁允许使用最大压力350bar

压力 – 流量曲线 PRESSURE DROP VS.FLOW



订货代号 TO ORDER

LDR D - * * * - * *

└──┬──┘
└──┘
└──┘
└──┘
└──┘
└──┘

1
2
3
4
5
6

- | | | |
|---|--|--|
| <p>1 功能
LDR= 直动式过载阀
Direct-Acting Relief Valve</p> | <p>4 弹簧调压范围 Spring Ranges
 A=500-3000psi(35-210bar)
 Preset:1000psi(70bar)
 W=800-4500psi(55-315bar)
 Preset:1000psi(70bar)
 B=300-1500psi(20-105bar)
 Preset:1000psi(70bar)
 C=1000-6000psi(70-420bar)
 Preset:1000psi(70bar)
 D=200-800psi(14-55bar)
 Preset:400psi(28bar)
 S=50-200psi(3.5-14bar)
 Preset:100psi(7bar)
 Factory pressure setting established at 15L/min;
 工厂的设定是指溢流阀开启 [流量为 15L/min] 时的压力;</p> | <p>5 油封 Seal Kits
 N= 丁晴橡胶 Buna N
 V= 氟橡胶 Viton</p> |
| <p>2 流量 Capacity
D=95L/min</p> | <p>6 阀块油口 Body Porting
 空白 Blank= 不带阀块 None
 6T=SAE6
 8T=SAE8
 2G=G 1/4
 3G=G 3/8</p> | |
| <p>3 控制方式 Control
 L=Standard Screw Adjustment
 K=Handknob</p> | | <p>※ 阀块详见章节 K-13
 其它螺纹油口也是可选择的
 Other Porting is Available</p> |

E

安装尺寸 INSTALLATION DIMENSIONS

Unit=Millimeters

