

# LDPC-10

## 双向液压锁

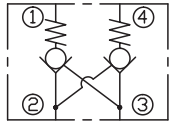
### 说明 DESCRIPTION

A cartridge-style dual pilot-operated check valve  
螺纹插装双向液压锁

### 工作 OPERATION

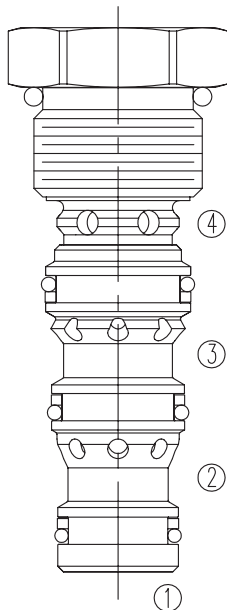
The valve will block flow from ① to ②, and from ④ to ③. Flow is allowed in the opposite direction when pressure is applied to port ② and/or ③. The valve has a 3:1 pilot ratio, so at least 1/3 of the load pressure at port ① or ④ is required at the pilot lines (port ③ or ②) to open the flow passage to allow flow from port ① or ④.  
①到②, ④到③关闭; 在相反方向, ②到①, ③到④打开。有 3: 1 的控制比, 所以在 ②口或③口的压力超过④口或①口的负载压力的 1/3 时, ④到③, ①到②打开。

### SYMBOL

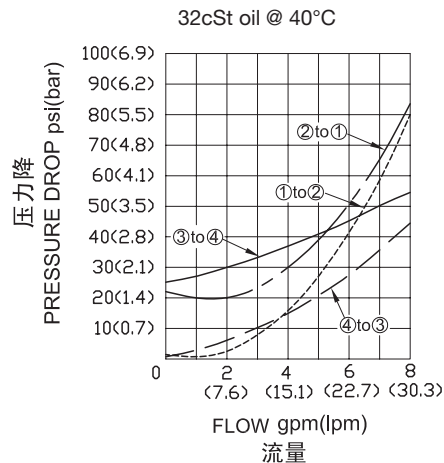


### 技术参数 SPECIFICATIONS

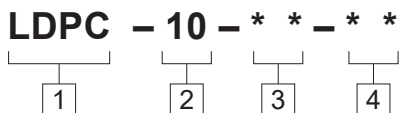
工作压力(Operating Pressure):	240bar
流量(Flow):	See PRESSURE DROP VS.FLOW graph.
单向阀泄漏(Check Valve Leakage):	2 drops/min.(滴/分)max. at 240bar
开启压力(Crack Pressures):	1.7=1.7bar
控制比(Pilot Ratio):	3:1
温度(Temperature):	-40°F to +250°F(-40°C to +120°C)
过滤(Filtration):	See page (参见) N-1
油液(Fluids):	Mineral-based fluids with viscosities of 7.4 to 420 cSt.(矿物油粘度)
插孔(Cavity):	10-4,See page M-2
阀块材料(Body Material):	6061-T6 aluminum alloy rated to 207bar, Steel & Ductile iron rated to 350bar 6061-T6铝,允许使用最大压力207bar 钢和球铁允许使用最大压力350bar



### 压力 - 流量曲线 PRESSURE DROP VS.FLOW



订货代号 TO ORDER



**1** 功能  
LDPC= 液压锁 Dual Pilot-Operated  
Cartridge Check Valve

**2** 规格 **Size**  
10=10 规格

**3** 开启压力 **Cracking Pressure**  
1.7=1.7bar

**4** 阀块油口 **Body Porting**  
空白 **Blank**= 不带阀块 **None**  
6T=SAE6  
8T=SAE8  
2G=G 1/4  
3G=G 3/8

※ 阀块详见章节 K-6  
其它螺纹油口也是可选择的  
Other Porting is Available

D

安装尺寸 **INSTALLATION DIMENSIONS**

Unit=Millimeters

